

FREEDOM 950

Benefits...

- No Machine Room Design (For Overhead Mounted Machine)
- Winding Drum Machine can be mounted at top of rails, avoiding the machine room (need location for control panel)
- Winding Drum Machine mounted at lower level takes up little space – shallow closet is necessary
- Most economical of traditional elevator models for 4-6 level residences
- Smooth operation identical to hydraulic elevators

The right situation...

- When there is no location to place a machine room
- Applications with 4 stops or more (cable driven elevator more economical than hydraulic)
- When a custom cab size is required – still very economical with custom cab sizes
- When a raised hardwood cab is requested – highest quality - very reasonable upgrade costs

Watch out for...

- Machine below – lower machine room must be adjacent to the rail wall
- Machine above – need small access door to machine
- Machine above – make sure there is enough overhead space

Additional Information...

- The installation takes approximately 3-4 days
- The customer must have site prepared with permanent power to a fuseable disconnect box
- Should have a functional telephone jack near disconnect
- Hoistway must be built to follow specs with special attention to reinforced rail wall
- The dimensions in the drawings are FINISHED dimensions, after sheetrock is installed
- The hoistway, must be sheetrocked, and doors must be hung prior to start of installation
- The hoistway should have a service light and power outlet
- Pit must be at least 8” in depth, and pit walls must be flush with hoistway walls (no lip)

Information to capture...

- Capture floor to floor measurements – must be within 1/4”
- Capture overhead distance on upper floor – must be at least 96” for 6’8” cab
- Capture finished hoistway dimensions – make sure you figure in sheetrock thickness
- Capture pit depth
- Note door locations and door swings
- Note location of rail wall and machine room
- Capture customer’s preferences regarding wall finishes, controller finish, and call stations

Section 14235 Elevators

Part 1- General

1.01 Section Includes.

- A. Furnish and provide all materials and labor necessary for the complete installation of the Elite Elevator.
- B. Obtain information on conditions affecting work at jobsite. Include verification of dimensions, field material for anchoring, accessibility and storage space. Verify voltages and outlets on electrical drawings.

1.02 Work Done By Others.

- A. Suitable, legal, two-hour fire-rated hoistway, if consistent with building construction.
- B. Pit poured to correct dimensions front to back and side to side and depth from the finished first floor level as indicated on the final layout drawings.
- C. Pit floor to be designed for an impact load of 3500 pounds.
- D. Suitable, fire rated hinged hoistway entrance doors and machine access doors.
- E. Machine room with an entrance door as indicated on the final layout drawings.
- F. Electrician shall furnish the 220 volt single-phase power supply with a line disconnect switch immediately adjoining the control cabinet, and within sight of the machine. A separate 120 volt 20 amp single-phase power with fused disconnect switch or circuit breaker with feeder wiring to controller.
- G. A light fixture and a 110-volt outlet must be provided in the machine area. The switch for operation of the light fixture must be located in the machine room area nearest the machine area access door.
- H. Connection of telephone traveling cable to outside central exchange, as required by ANSI A17.1 CODE.

1.03 References.

Design and installation shall be in compliance with regulations and all governing agencies. Lift shall be subject to local, city and state approval prior to installation, along with city and state inspection after installation. Special local requirements shall be determined and handled locally by distributor with manufacturers agreement.

1.04 Submittals.

Submit drawings or manufacturer's literature for approval. Drawings shall show rough-in requirements and wiring requirements.

1.05 Substitutions.

No substitutions will be considered unless written request for approval has been submitted by the bidder and was received by the architect at least ten (10) days prior to the date of receipt of bids. Each such request shall include the name of the materials for which it is to be substituted and a complete description of the proposed substitute including drawings, cuts, mock-ups, performance and test date, a list of projects of similar scope photographs of existing installations and any other information necessary for evaluation.

PART 2 - PRODUCTS

2.01 Manufacturer.

American Crescent/Matot, Picayune, MS or Bellwood, IL

2.02 Product Type.

- A. Model shall be the Elite Residential Elevator.
- B. Car to be _____ inches wide by _____ inches deep with a minimum inside clear height of 6'-8". Lifting capacity to be 750 pounds. Elevator serves _____ stops and travels a total distance of _____ feet _____ inches. Provide gate (s) on car as required to accommodate landing requirements.

2.03 Fabrication.

- A. CAB: [] Sierra, [] Executive, [] Plantation, or [] Presidential
- B. PLATFORM: Cab platform shall be constructed of 1 1/4" unfinished oak veneer plywood.
- C. LIGHTING: Lighting will consist of two (2) recessed ceiling lights operated on a separate 110 volt circuit.
- D. CAR DOOR: Each open side of cab shall be equipped with a folding car door with (3) clear acrylic center panels and a finish that matches selected car finish.
- E. DOOR INTERLOCKS: A hoistway door interlock shall be furnished for each hoistway entrance. Interlock shall prevent operation unless doors are closed and prevent opening of door when car is not at that landing.
- F. OPERATION: Operation shall be automatic. A call station shall be furnished for each entrance. A push-button station in the car shall have one button for each level served. Car station shall also contain an emergency stop switch, alarm button, and light switch. Alarm bell shall be furnished on top of car.
- G. GUIDE RAILS: Steel rails shall be furnished to guide the car. Guide rails shall be mounted to the floor slab and hoistway wall with steel brackets.
- H. MACHINE: Machine shall be 3 HP winding drum type consisting of two (2), eight (8) inch diameter drums grooved for 3/8" x 8 x 19 steel cable. Machine must be located adjacent to the hoistway of any floor level or inside the shaft above the car.
- I. CARRIAGE: Carriage shall be attached to the car platform on the guide rail side of the car. Instantaneous broken cable device shall be provided on the carriage.
- J. ELECTRIC SUPPLY: Shall be 220 volt, single phase, 30 amps, or 220 volt, three phase, 60 hertz, 30 amps.
- K. CONTROLLER: Controller shall be programmable, solid state located in the machine room. Auto call, single floor register operation shall be provided.

2.04 Performance.

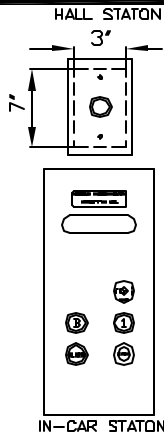
- A. Rated load 750-pound capacity.
 - B. Nominal travel speed of 30 F.P.M.
-

Part 3 - Execute

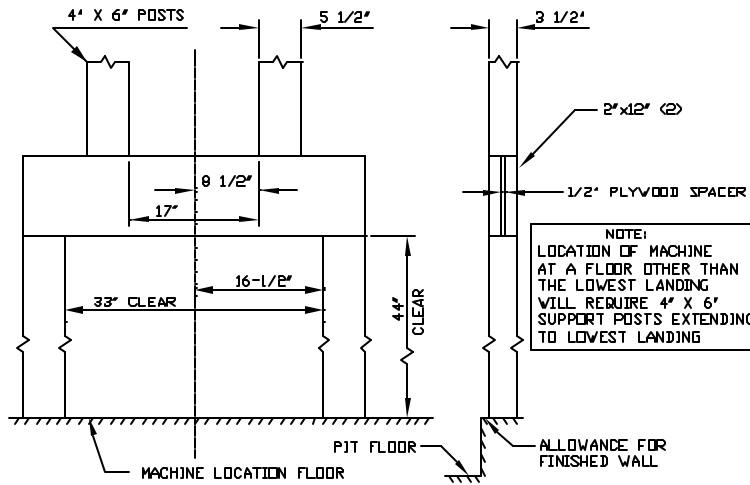
3.01 Installation.

- A. Coordinate work with general contractor.
 - B. Leave standard electrical connection drawings with electrical contractor to make final electrical connection. Wiring within unit shall be done as part of work of this section, 30-amp circuit required.
 - C. The installation of the elevator shall be made in accordance with the approved plans and specifications and manufacturers installation instructions.
-

OPERATING CONTROLS
(TYPICAL)

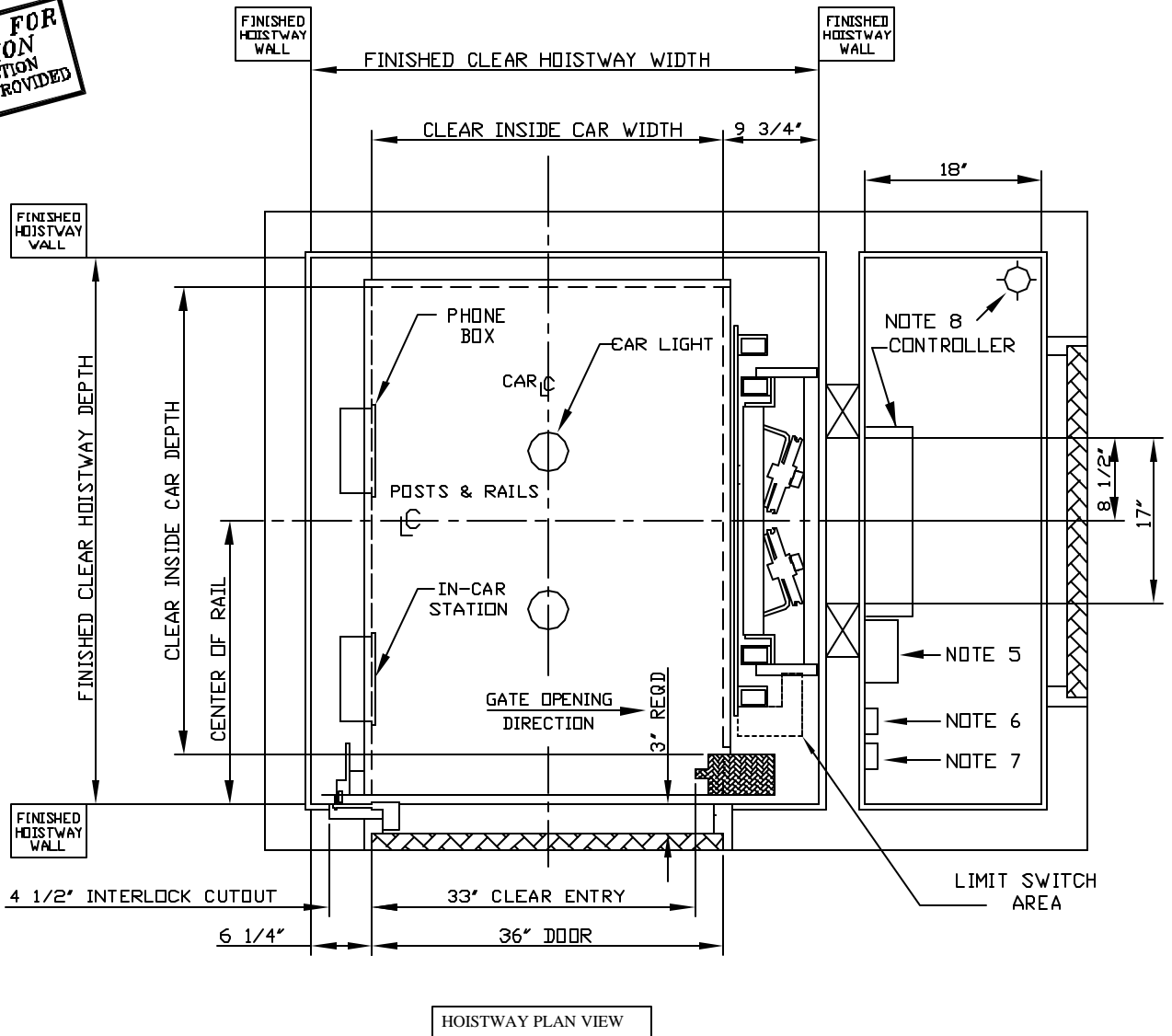


RAIL SUPPORT DETAIL



NOTE:
LOCATION OF MACHINE
AT A FLOOR OTHER THAN
THE LOWEST LANDING
WILL REQUIRE 4" X 6"
SUPPORT POSTS EXTENDING
TO LOWEST LANDING

**DO NOT USE FOR
CONSTRUCTION**
FINAL CONSTRUCTION
PRINT WILL BE PROVIDED

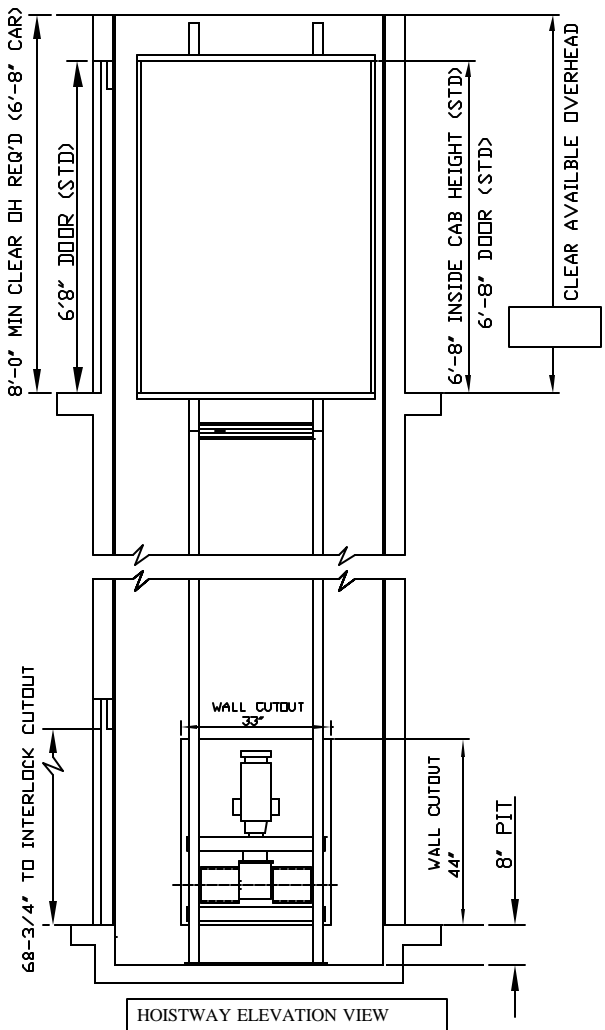


HOISTWAY PLAN VIEW

CAR SIZE	HOISTWAY WIDTH	HOISTWAY DEPTH	CENTER OF RAIL
36' W X 48' D	52"	56"	29"
36' W X 60" D	52"	68"	35"
40' W X 54" D	56"	62"	32"

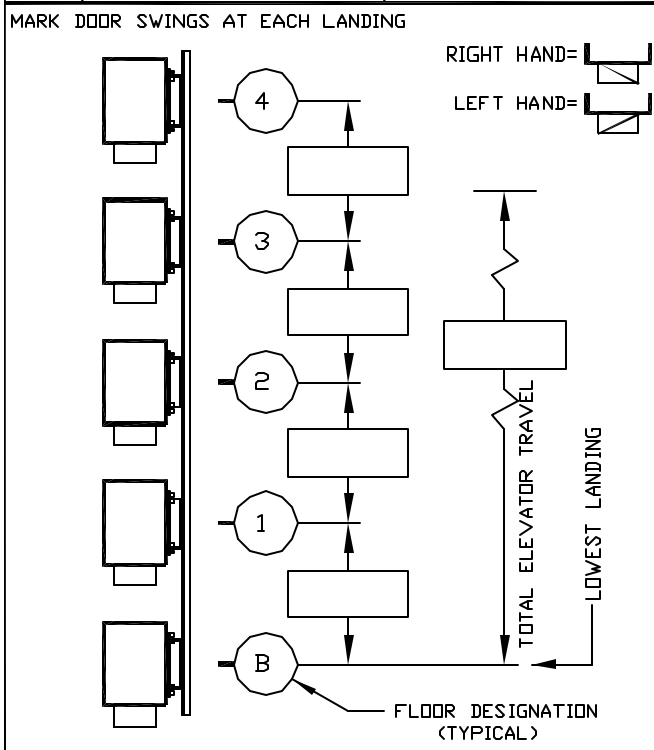
AMERICAN CRESCENT / MATOT
 PHONE: (601) 798-9392 PHONE: (708) 547-1888
 FAX: (601) 798-9444 FAX: (708) 547-1608

DRAWING NO. SCALE:
 DB1RH9-WP NO SCALE



HOISTWAY ELEVATION VIEW

TRAVEL/DOOR LOCATIONS & SWINGS/FLOOR DESIGNATIONS



WORK DONE BY OTHERS

- (1) A suitable, legal, 2 hour rated, hoistway must be provided plumb and square within 1/16" for every 10' of travel. Hoistway must be free of all obstructions. Hoistway floor must be level.
- (2) Suitable, legal, 1-1/2" fire rated hoistway entrance doors and a machine access door must be provided. Entrance doors and associated framing to be provided and installed after the elevator is set in place. Door closers are recommended.
- (3) The front wall of the hoistway, for the entire width of the hoistway, at least 8'-0" high, is to be left open until the elevator car is installed.
- (4) Clearance between the hoistway doors and the car sill must not exceed 3" and the clearance between the hoistway door and the closed car gate must not exceed 5" per ANSI/ASME Elevator Code A17.1 - 1990. Check local codes provisions which may take precedence.
- (5) A fused, lockable, 3 pole, 240VAC, 30 amp, disconnect switch is to be provided.
- (6) A separate 120VAC, 15 amp, single phase power supply with a fused, lockable switch or circuit breaker must be provided and brought to the elevator controller for the car lights.
- (7) An outside telephone line must be provided and brought to the controller.
- (8) A suitable machine room, with a 120VAC convenience outlet, a light and a light switch must be provided. Machine room lighting must be maintained at a minimum of 10 foot-candles.
- (9) A pit of correct dimensions and suitable load bearing capacity must be provided on the lowest level as shown on the final drawings.
- (10) Structural load requirements: 1800lbs. vertical on pit floor, 50lbs. horizontal at each wall bracket.

MECHANICAL AND CAR SPECIFICATIONS

ESTIMATED MACHINE WEIGHT = 250 LBS	CAPACITY: 750 LBS
MAXIMUM CAR WEIGHT (INCLUDING CAR CAPACITY) = 1400 LBS	

JOB SPECIFICATIONS

MACHINE TYPE:	WINDING DRUM ADJACENT
MOTOR:	3 HP, 220 V, 1 PH, 60 HZ
AMPERAGE:	STARTING 78 RUNNING 15
CAB DESIGN	
ENTRANCE TRIM	
WALL FINISH	
GATE	
HANDRAIL	
FLOORING	
PHONE	
HOISTWAY DOORS	BY OTHERS
FIXTURE FINISH	
CAR CEILING	WHITE MELAMINE
MISC. CAR OPTIONS	

PROJECT _____ ELEVATOR CONTRACTOR _____

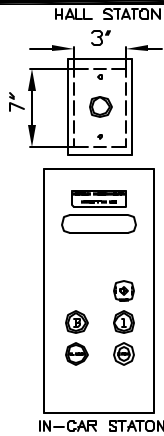
NO.	REVISIONS	DATE	BY
A			
B			
C			

AMERICAN CRESCENT / MATOT
 PHONE: (601) 798-9392 PHONE: (708) 547-1888
 FAX: (601) 798-9444 FAX: (708) 647-1608

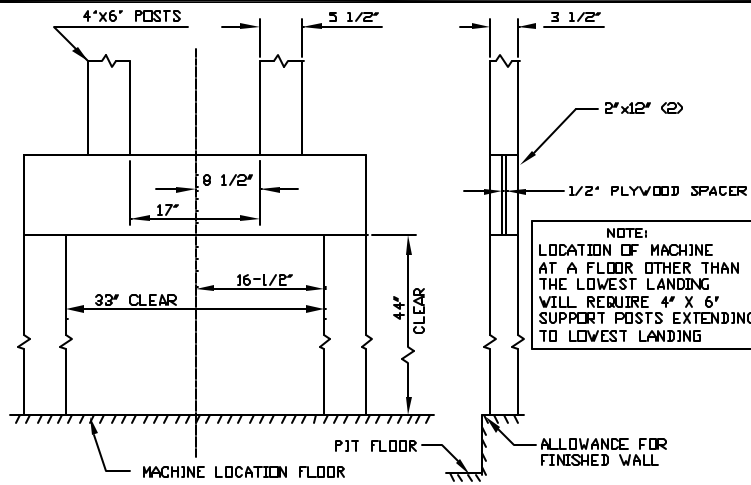
DATE: 4/12/02	SCALE:
DRAWING NO. DB1RH9-WP	NO SCALE

THIS IS A TYPICAL DRAWING. CONTACT YOUR AMERICAN CRESCENT/MATOT SALES REPRESENTATIVE FOR PROJECT SPECIFIC DRAWINGS. DIMENSIONS ARE SUBJECT TO CHANGE WITHOUT NOTICE.

OPERATING CONTROLS
(TYPICAL)

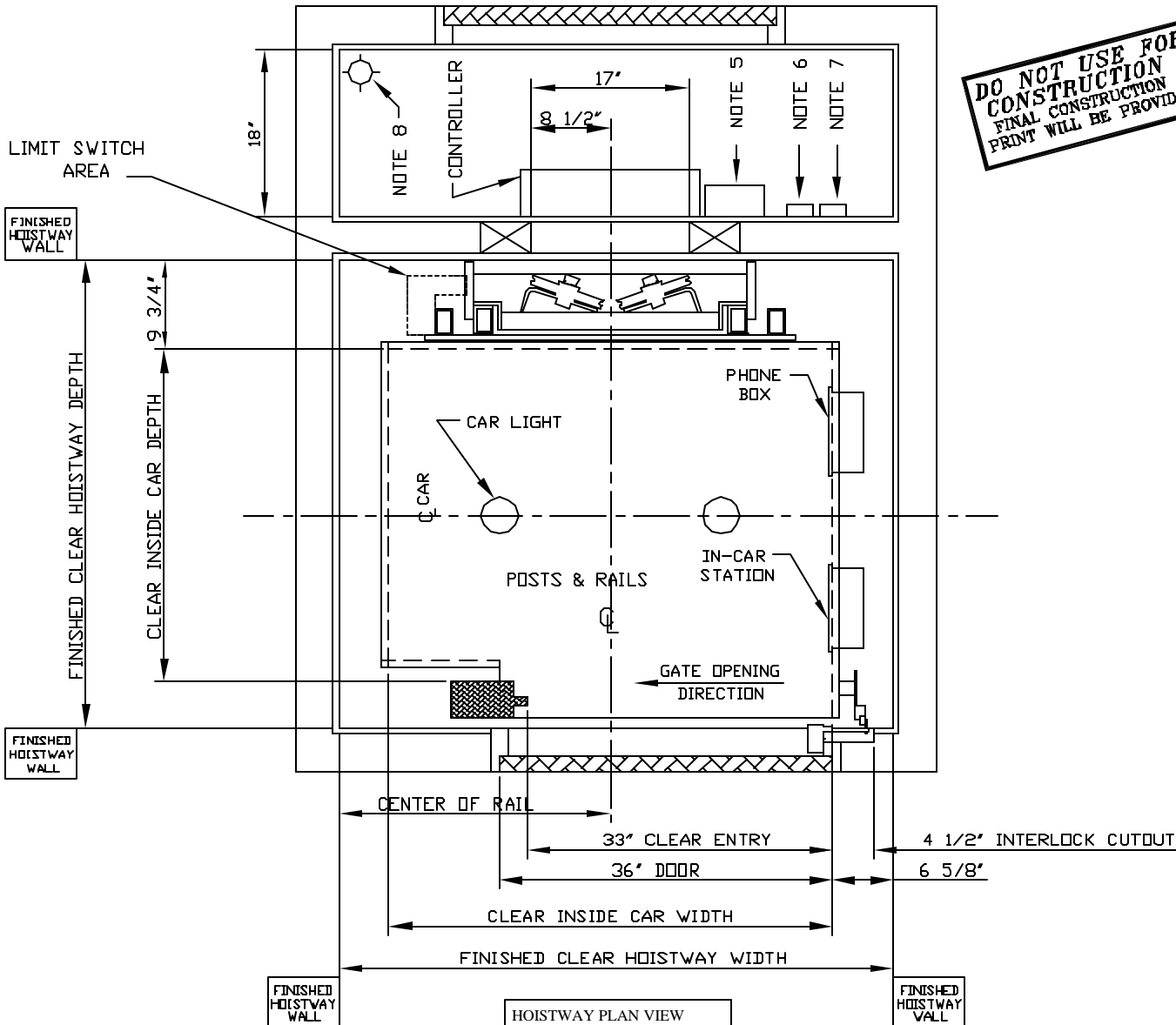


RAIL SUPPORT DETAIL



NOTE:
LOCATION OF MACHINE
AT A FLOOR OTHER THAN
THE LOWEST LANDING
WILL REQUIRE 4' X 6'
SUPPORT POSTS EXTENDING
TO LOWEST LANDING

**DO NOT USE FOR
CONSTRUCTION
FINAL CONSTRUCTION
PRINT WILL BE PROVIDED**

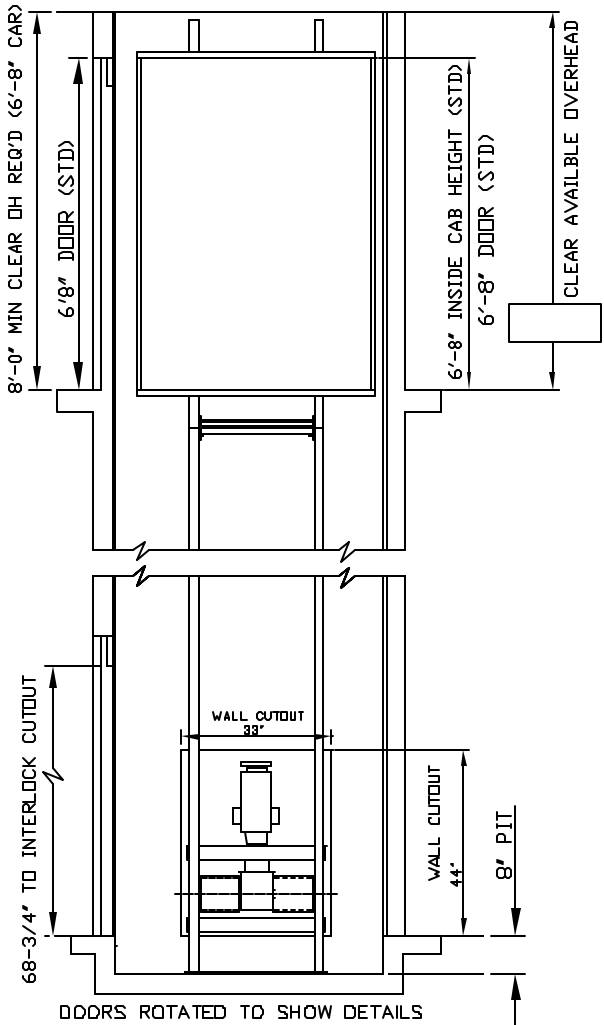


HOISTWAY PLAN VIEW

CAR SIZE	HOISTWAY WIDTH	HOISTWAY DEPTH	CENTER OF RAIL
48' W X 36' D	60"	50 3/4'	29 3/8"
60' W X 36' D	72"	50 3/4'	35 3/8"

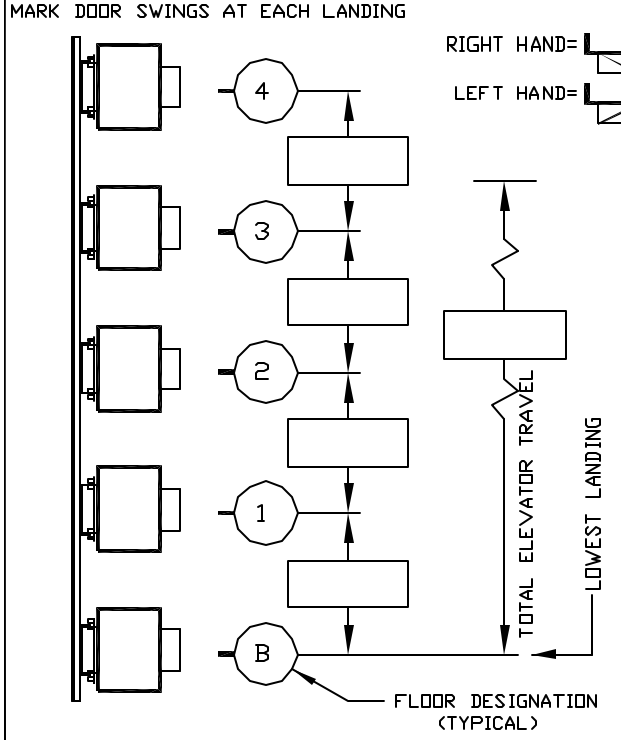
AMERICAN CRESCENT / MATOT
 PHONE: (601) 798-9392 PHONE: (708) 647-1888
 FAX: (601) 798-9444 FAX: (708) 547-1808

DRAWING NO. SCALE:
 DB1RRL-WP NO SCALE



HOISTWAY ELEVATION VIEW

TRAVEL/DOOR LOCATIONS & SWINGS/FLOOR DESIGNATIONS



WORK DONE BY OTHERS

- (1) A suitable, legal, 2 hour rated, hoistway must be provided plumb and square within 1/16" for every 10' of travel. Hoistway must be free of all obstructions. Hoistway floor must be level.
- (2) Suitable, legal, 1-1/2" fire rated hoistway entrance doors and a machine access door must be provided. Entrance doors and associated framing to be provided and installed after the elevator is set in place. Door closers are recommended.
- (3) The front wall of the hoistway, for the entire width of the hoistway, at least 8'-0" high, is to be left open until the elevator car is installed.
- (4) Clearance between the hoistway doors and the car sill must not exceed 3" and the clearance between the hoistway door and the closed car gate must not exceed 5" per ANSI/ASME Elevator Code A17.1 - 1990. Check local codes provisions which may take precedence.
- (5) A fused, lockable, 3 pole, 240VAC, 30 amp, disconnect switch is to be provided.
- (6) A separate 120VAC, 15 amp, single phase power supply with a fused, lockable switch or circuit breaker must be provided and brought to the elevator controller for the car lights.
- (7) An outside telephone line must be provided and brought to the controller.
- (8) A suitable machine room, with a 120VAC convenience outlet, a light and a light switch must be provided. Machine room lighting must be maintained at a minimum of 10 foot-candles.
- (9) A pit of correct dimensions and suitable load bearing capacity must be provided on the lowest level as shown on the final drawings.
- (10) Structural load requirements: 1800lbs. vertical on pit floor, 50lbs. horizontal at each wall bracket.

MECHANICAL AND CAR SPECIFICATIONS

ESTIMATED MACHINE WEIGHT = 250 LBS	CAPACITY: 750 LBS
MAXIMUM CAR WEIGHT (INCLUDING CAR CAPACITY) = 1400 LBS	

JOB SPECIFICATIONS

MACHINE TYPE:	WINDING DRUM ADJACENT
MOTOR:	3 HP, 220 V, 1 PH, 60 HZ
AMPERAGE:	STARTING 78 RUNNING 15
CAB DESIGN	
ENTRANCE TRIM	
WALL FINISH	
GATE	
HANDRAIL	
FLOORING	
PHONE	
HOISTWAY DOORS	BY OTHERS
FIXTURE FINISH	
CAR CEILING	WHITE MELAMINE
MISC. CAR OPTIONS	

PROJECT ELEVATOR CONTRACTOR

NO.	REVISIONS	DATE	BY
A			
B			
C			

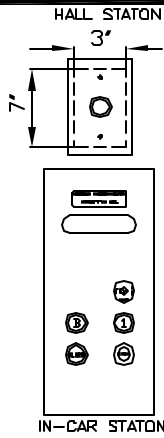
AMERICAN CRESCENT / MATOT
 PHONE: (601) 798-9392 PHONE: (708) 547-1888
 FAX: (601) 798-9444 FAX: (708) 647-1608

DATE: 4/12/02	SCALE:
DRAWING NO. DB1RRL-WP	NO SCALE

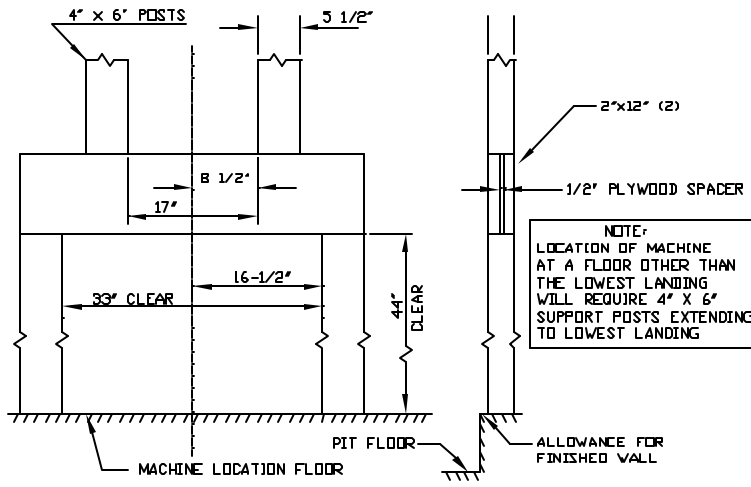
THIS IS A TYPICAL DRAWING. CONTACT YOUR AMERICAN CRESCENT/MATOT SALES REPRESENTATIVE FOR PROJECT SPECIFIC DRAWINGS. DIMENSIONS ARE SUBJECT TO CHANGE WITHOUT NOTICE.

OPERATING CONTROLS

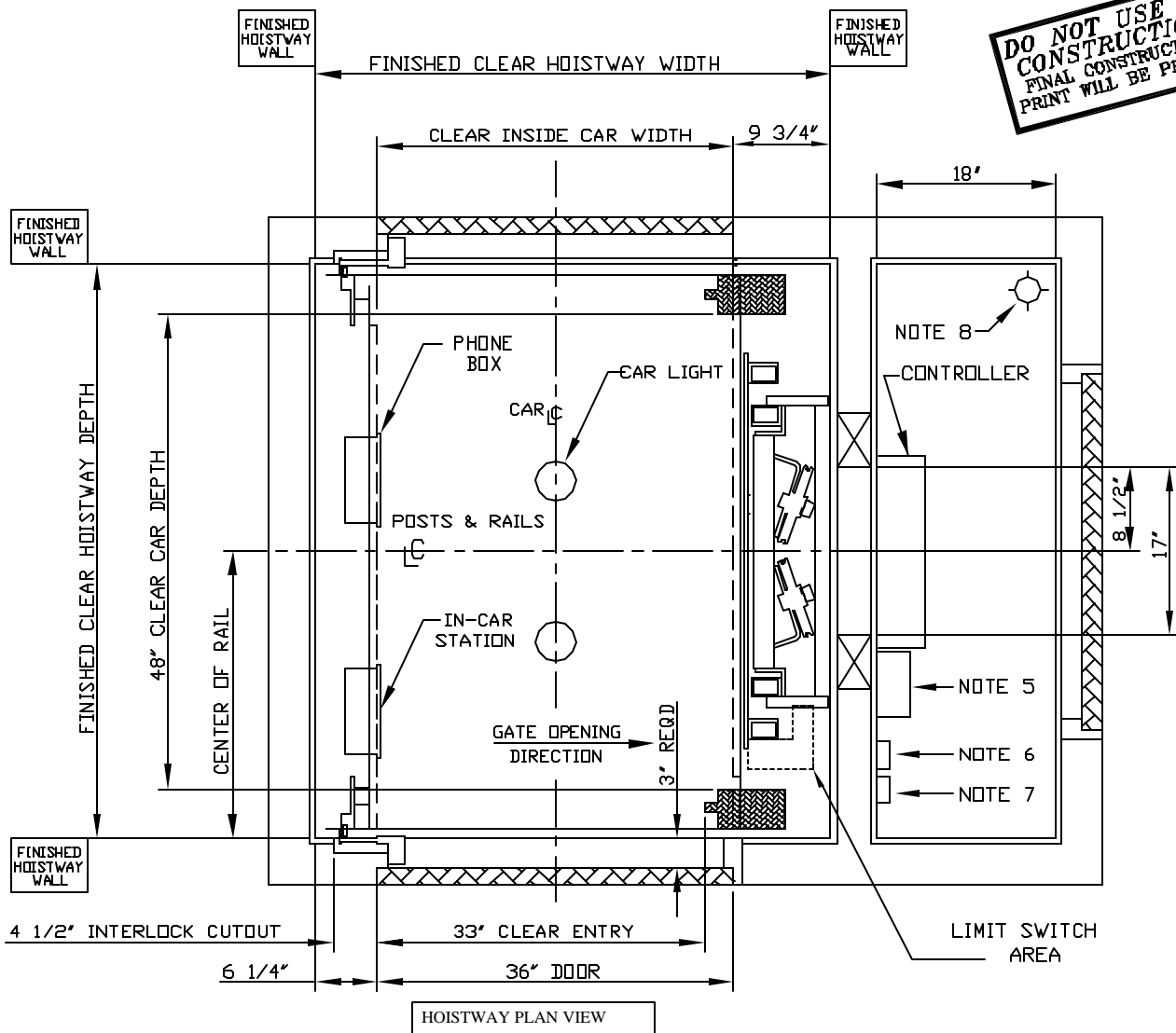
(TYPICAL)



RAIL SUPPORT DETAIL



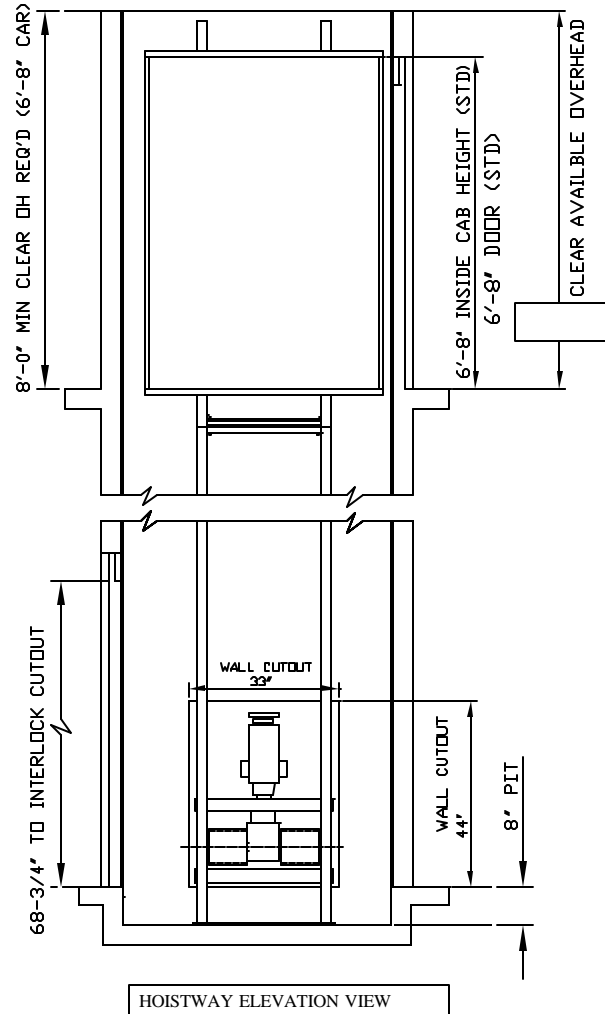
DO NOT USE FOR CONSTRUCTION
FINAL CONSTRUCTION PRINT WILL BE PROVIDED



CAR SIZE	HOISTWAY WIDTH	HOISTWAY DEPTH	CENTER OF RAIL
36' W X 48' D	52"	58"	29"
36' W X 60" D	52"	70"	35"
40' W X 54" D	56"	64"	32"

AMERICAN CRESCENT / MATOT
 PHONE: (601) 798-9392 PHONE: (708) 547-1888
 FAX: (601) 798-9444 FAX: (708) 547-1608

DRAWING NO. SCALE:
 DB2RH9-WP NO SCALE



WORK DONE BY OTHERS

- (1) A suitable, legal, 2 hour rated, hoistway must be provided plumb and square within 1/16" for every 10' of travel. Hoistway must be free of all obstructions. Hoistway floor must be level.
- (2) Suitable, legal, 1-1/2' fire rated hoistway entrance doors and a machine access door must be provided. Entrance doors and associated framing to be provided and installed after the elevator is set in place. Door closers are recommended.
- (3) The front wall of the hoistway, for the entire width of the hoistway, at least 8'-0" high, is to be left open until the elevator car is installed.
- (4) Clearance between the hoistway doors and the car sill must not exceed 3" and the clearance between the hoistway door and the closed car gate must not exceed 5" per ANSI/ASME Elevator Code A17.1 - 1990. Check local codes provisions which may take precedence.
- (5) A fused, lockable, 3 pole, 240VAC, 30 amp, disconnect switch is to be provided.
- (6) A separate 120VAC, 15 amp, single phase power supply with a fused, lockable switch or circuit breaker must be provided and brought to the elevator controller for the car lights.
- (7) An outside telephone line must be provided and brought to the controller.
- (8) A suitable machine room, with a 120VAC convenience outlet, a light and a light switch must be provided. Machine room lighting must be maintained at a minimum of 10 foot-candles.
- (9) A pit of correct dimensions and suitable load bearing capacity must be provided on the lowest level as shown on the final drawings.
- (10) Structural load requirements: 1800lbs. vertical on pit floor, 50lbs. horizontal at each wall bracket.

MECHANICAL AND CAR SPECIFICATIONS

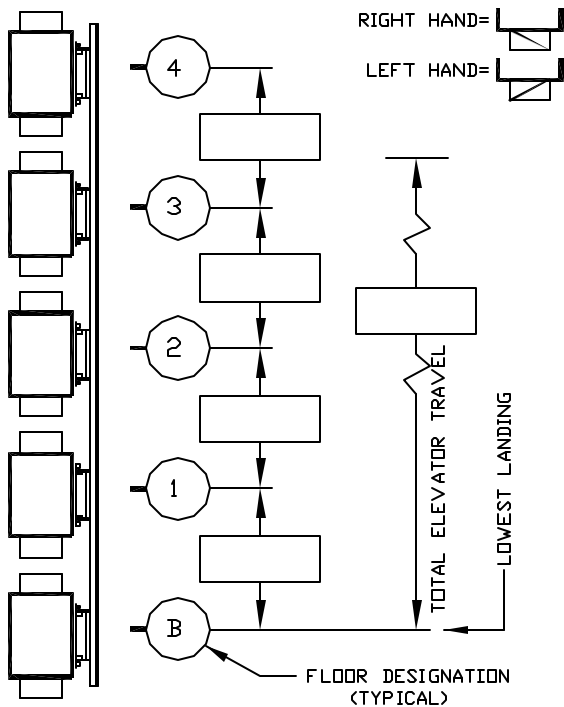
ESTIMATED MACHINE WEIGHT = 250 LBS CAPACITY: 750 LBS
 MAXIMUM CAR WEIGHT (INCLUDING CAR CAPACITY) = 1400 LBS

JOB SPECIFICATIONS

MACHINE TYPE:	WINDING DRUM ADJACENT
MOTOR:	3 HP, 220 V, 1 PH, 60 HZ
AMPERAGE:	STARTING 78 RUNNING 15
CAB DESIGN	
ENTRANCE TRIM	
WALL FINISH	
GATE	
HANDRAIL	
FLOORING	
PHONE	
HOISTWAY DOORS	BY OTHERS
FIXTURE FINISH	
CAR CEILING	WHITE MELAMINE
MISC. CAR OPTIONS	

TRAVEL/DOOR LOCATIONS & SWINGS/FLOOR DESIGNATIONS

MARK DOOR SWINGS AT EACH LANDING



PROJECT ELEVATOR CONTRACTOR

NO.	REVISIONS	DATE	BY
A			
B			
C			

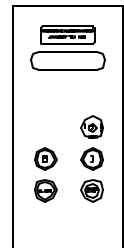
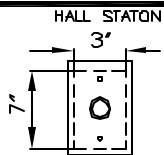
AMERICAN CRESCENT / MATOT
 PHONE: (601) 798-9392 PHONE: (708) 647-1888
 FAX: (601) 798-9444 FAX: (708) 647-1608

DATE: 4/12/02 SCALE:
 DRAWING NO. DB2RH9-WP NO SCALE

THIS IS A TYPICAL DRAWING. CONTACT YOUR AMERICAN CRESCENT/MATOT SALES REPRESENTATIVE FOR PROJECT SPECIFIC DRAWINGS. DIMENSIONS ARE SUBJECT TO CHANGE WITHOUT NOTICE.

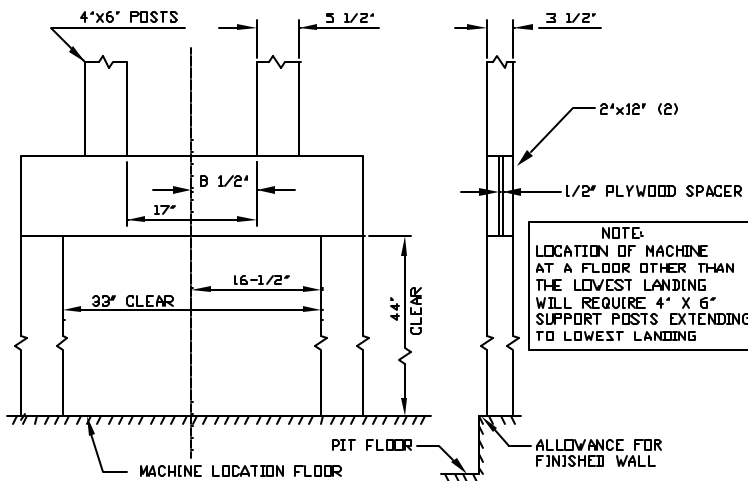
OPERATING CONTROLS

(TYPICAL)



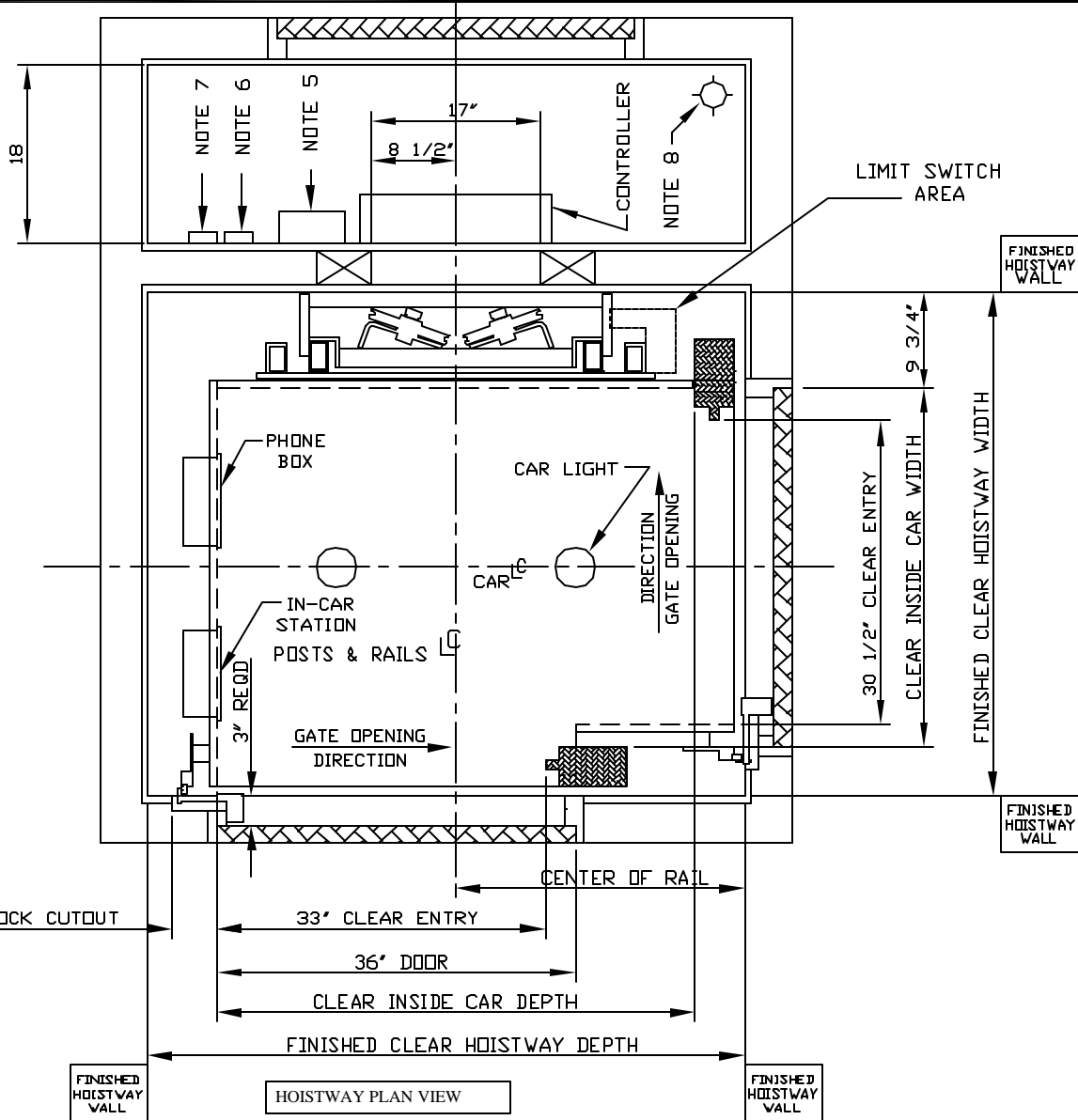
IN-CAR STATION

RAIL SUPPORT DETAIL



NOTE:
LOCATION OF MACHINE
AT A FLOOR OTHER THAN
THE LOWEST LANDING
WILL REQUIRE 4" X 6"
SUPPORT POSTS EXTENDING
TO LOWEST LANDING

**DO NOT USE FOR
CONSTRUCTION**
FINAL CONSTRUCTION
PRINT WILL BE PROVIDED



HOISTWAY PLAN VIEW

CAR SIZE	HOISTWAY WIDTH	HOISTWAY DEPTH	CENTER OF RAIL
36" W X 48" D	50 3/4"	60"	29"
36" W X 60" D	50 3/4"	72"	35"

AMERICAN CRESCENT / MATOT

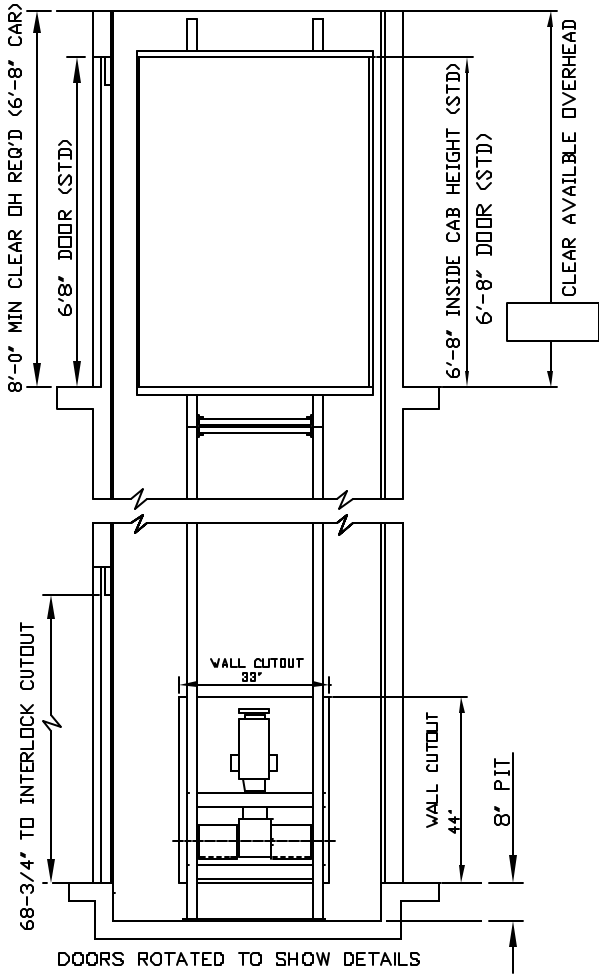
PHONE: (601) 798-9392 PHONE: (708) 547-1888
 FAX: (601) 798-9444 FAX: (708) 547-1608

DRAWING NO.

SCALE:

DB3RH99-WP

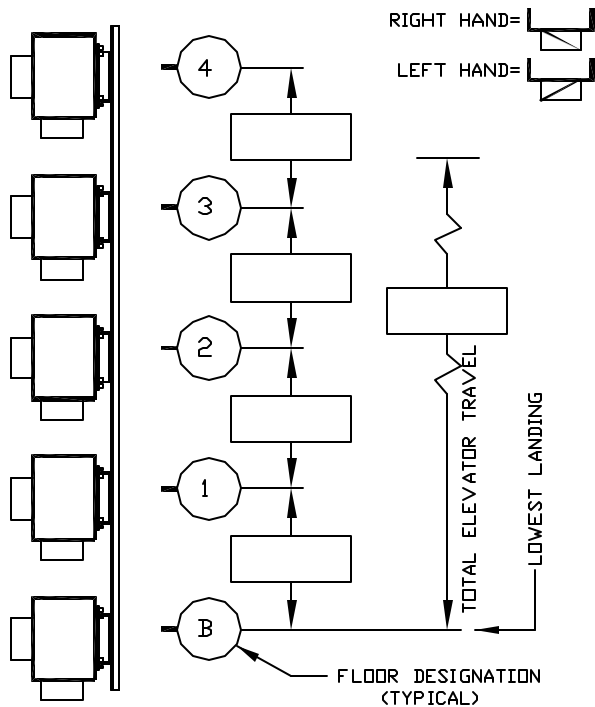
NO SCALE



HOISTWAY ELEVATION VIEW

TRAVEL/DOOR LOCATIONS & SWINGS/FLOOR DESIGNATIONS

MARK DOOR SWINGS AT EACH LANDING



WORK DONE BY OTHERS

(1) A suitable, legal, 2 hour rated, hoistway must be provided plumb and square within 1/16" for every 10' of travel. Hoistway must be free of all obstructions. Hoistway floor must be level.

(2) Suitable, legal, 1-1/2' fire rated hoistway entrance doors and a machine access door must be provided. Entrance doors and associated framing to be provided and installed after the elevator is set in place. Door closers are recommended.

(3) The front wall of the hoistway, for the entire width of the hoistway, at least 8'-0" high, is to be left open until the elevator car is installed.

(4) Clearance between the hoistway doors and the car sill must not exceed 3" and the clearance between the hoistway door and the closed car gate must not exceed 5" per ANSI/ASME Elevator Code A17.1 - 1990. Check local codes provisions which may take precedence.

(5) A fused, lockable, 3 pole, 240VAC, 30 amp, disconnect switch is to be provided.

(6) A separate 120VAC, 15 amp, single phase power supply with a fused, lockable switch or circuit breaker must be provided and brought to the elevator controller for the car lights.

(7) An outside telephone line must be provided and brought to the controller.

(8) A suitable machine room, with a 120VAC convenience outlet, a light and a light switch must be provided. Machine room lighting must be maintained at a minimum of 10 foot-candles.

(9) A pit of correct dimensions and suitable load bearing capacity must be provided on the lowest level as shown on the final drawings

(10) Structural load requirements: 1800lbs. vertical on pit floor, 50lbs. horizontal at each wall bracket.

MECHANICAL AND CAR SPECIFICATIONS

ESTIMATED MACHINE WEIGHT = 250 LBS CAPACITY: 750 LBS

MAXIMUM CAR WEIGHT (INCLUDING CAR CAPACITY) = 1400 LBS

JOB SPECIFICATIONS

MACHINE TYPE:	WINDING DRUM ADJACENT
MOTOR:	3 HP, 220 V, 1 PH, 60 HZ
AMPERAGE:	STARTING 78 RUNNING 15
CAB DESIGN	
ENTRANCE TRIM	
WALL FINISH	
GATE	
HANDRAIL	
FLOORING	
PHONE	
HOISTWAY DOORS	BY OTHERS
FIXTURE FINISH	
CAR CEILING	WHITE MELAMINE
MISC. CAR OPTIONS	

PROJECT

ELEVATOR CONTRACTOR

NO.	REVISIONS	DATE	BY
A			
B			
C			

AMERICAN CRESCENT / MATOT

PHONE: (601) 798-9392 PHONE: (708) 647-1888
 FAX: (601) 798-9444 FAX: (708) 547-1608

DATE: 4/12/02

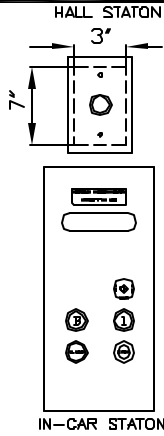
SCALE:

DRAWING NO.
DB3RH99-WP

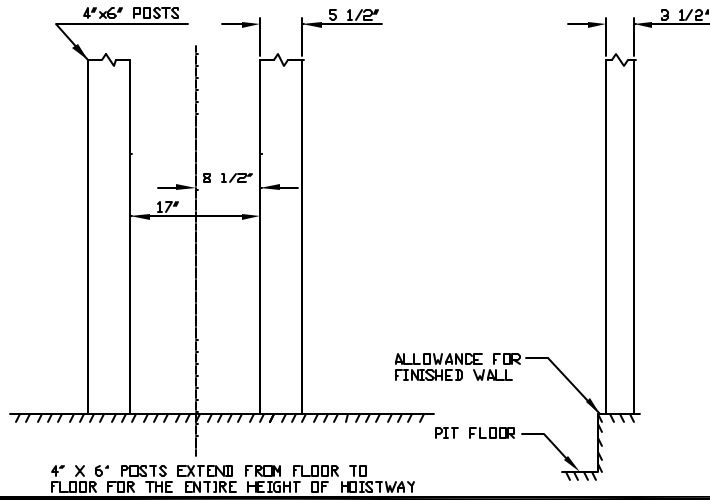
NO SCALE

THIS IS A TYPICAL DRAWING. CONTACT YOUR AMERICAN CRESCENT/MATOT SALES REPRESENTATIVE FOR PROJECT SPECIFIC DRAWINGS. DIMENSIONS ARE SUBJECT TO CHANGE WITHOUT NOTICE.

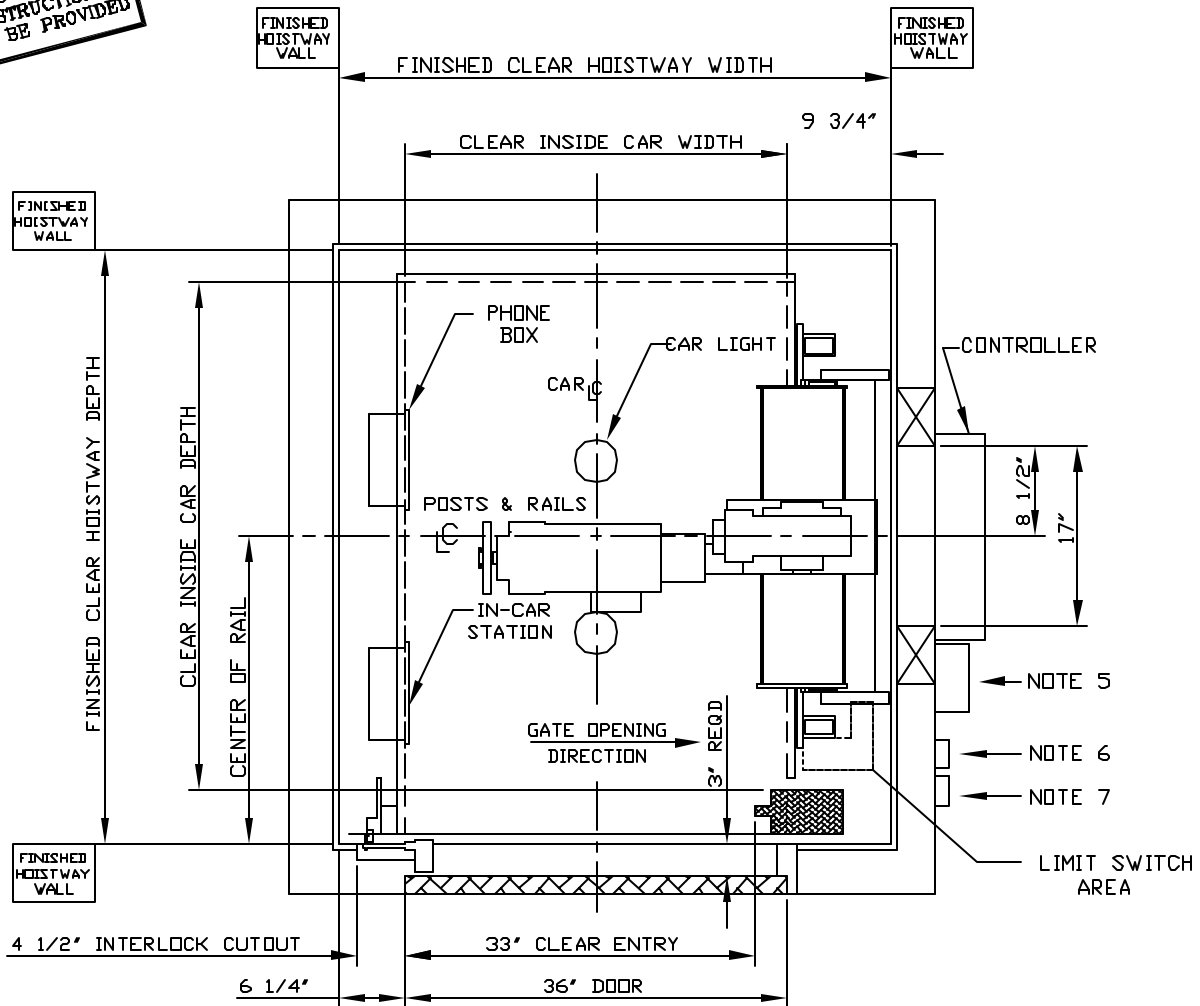
OPERATING CONTROLS
(TYPICAL)



RAIL SUPPORT DETAIL



**DO NOT USE FOR
CONSTRUCTION**
FINAL CONSTRUCTION
PRINT WILL BE PROVIDED



HOISTWAY PLAN VIEW

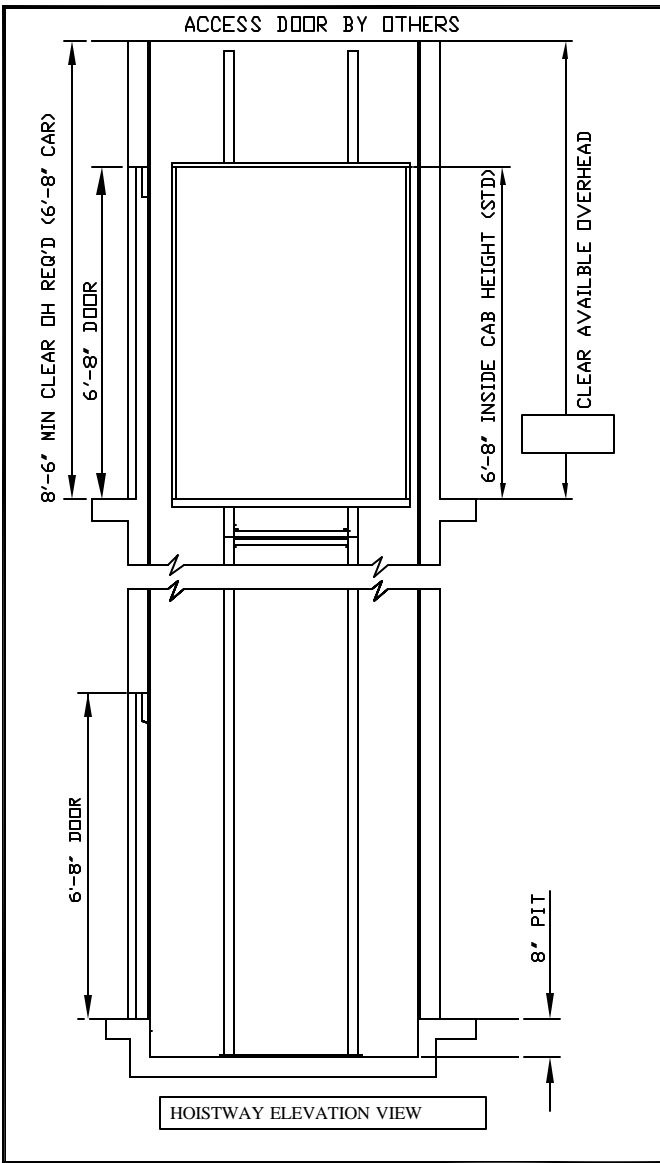
CAR SIZE	HOISTWAY WIDTH	HOISTWAY DEPTH	CENTER OF RAIL
36' W X 48' D	52"	56"	29"
36' W X 60' D	52"	68"	35"
40' W X 54' D	56"	62"	32"

AMERICAN CRESCENT / MATOT

PHONE: (601) 798-9392 PHONE: (708) 647-1888
FAX: (601) 798-9444 FAX: (708) 547-1808

DRAWING NO.
DO1RH9-WP

SCALE:
NO SCALE



- WORK DONE BY OTHERS
- (1) A suitable, legal, 2 hour rated, hoistway must be provided plumb and square within 1/16" for every 10' of travel. Hoistway must be free of all obstructions. Hoistway floor must be level.
 - (2) Suitable, legal, 1-1/2' fire rated hoistway entrance doors and a machine access door must be provided. Entrance doors and associated framing to be provided and installed after the elevator is set in place. Door closers are recommended.
 - (3) The front wall of the hoistway, for the entire width of the hoistway, at least 8'-0" high, is to be left open until the elevator car is installed.
 - (4) Clearance between the hoistway doors and the car sill must not exceed 3" and the clearance between the hoistway door and the closed car gate must not exceed 5" per ANSI/ASME Elevator Code A17.1 - 1990. Check local codes provisions which may take precedence.
 - (5) A fused, lockable, 3 pole, 240VAC, 30 amp, disconnect switch is to be provided.
 - (6) A separate 120VAC, 15 amp, single phase power supply with a fused, lockable switch or circuit breaker must be provided and brought to the elevator controller for the car lights.
 - (7) An outside telephone line must be provided and brought to the controller.
 - (8) A suitable machine room, with a 120VAC convenience outlet, a light and a light switch must be provided. Machine room lighting must be maintained at a minimum of 10 foot-candles.
 - (9) A pit of correct dimensions and suitable load bearing capacity must be provided on the lowest level as shown on the final drawings
 - (10) Structural load requirements: 1800lbs. vertical on pit floor, 50lbs. horizontal at each wall bracket.

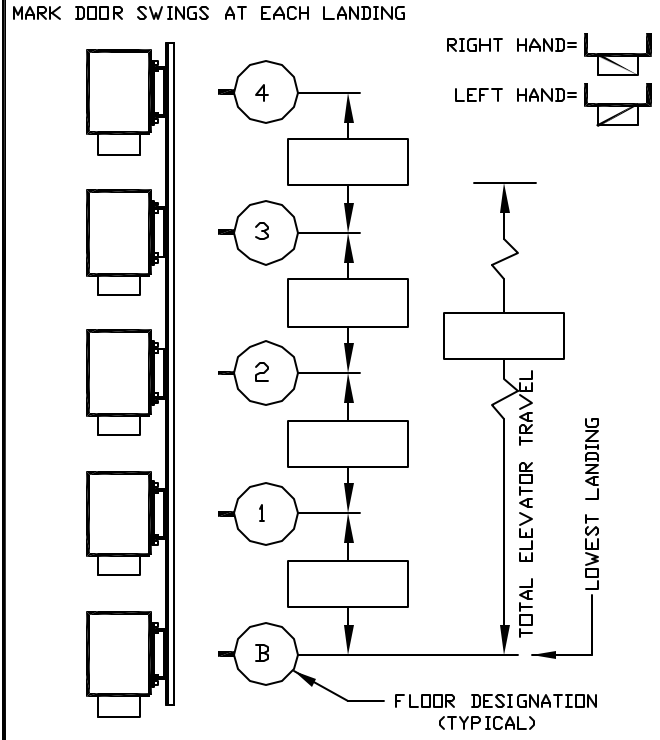
MECHANICAL AND CAR SPECIFICATIONS

ESTIMATED MACHINE WEIGHT = 250 LBS CAPACITY: 750 LBS
 MAXIMUM CAR WEIGHT (INCLUDING CAR CAPACITY) = 1400 LBS

JOB SPECIFICATIONS

MACHINE TYPE:	WINDING DRUM ABOVE
MOTOR:	3 HP, 220 V, 1 PH, 60 HZ
AMPERAGE:	STARTING 78 RUNNING 15
CAB DESIGN	
ENTRANCE TRIM	
WALL FINISH	
GATE	
HANDRAIL	
FLOORING	
PHONE	
HOISTWAY DOORS	BY OTHERS
FIXTURE FINISH	
CAR CEILING	WHITE MELAMINE
MISC. CAR OPTIONS	

TRAVEL/DOOR LOCATIONS & SWINGS/FLOOR DESIGNATIONS



PROJECT	ELEVATOR CONTRACTOR
---------	---------------------

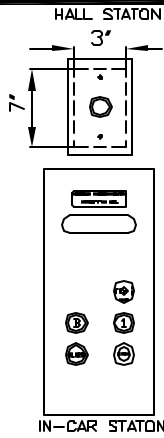
NO.	REVISIONS	DATE	BY
A			
B			
C			

AMERICAN CRESCENT / MATOT
 PHONE: (601) 798-9392 PHONE: (708) 647-1888
 FAX: (601) 798-9444 FAX: (708) 547-1608

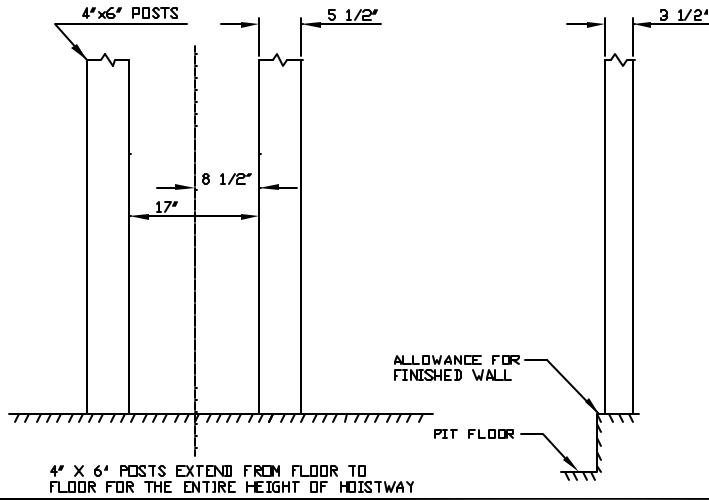
DATE: 4/12/02	SCALE:
DRAWING NO. DO1RH9-WP	NO SCALE

THIS IS A TYPICAL DRAWING. CONTACT YOUR AMERICAN CRESCENT/MATOT SALES REPRESENTATIVE FOR PROJECT SPECIFIC DRAWINGS. DIMENSIONS ARE SUBJECT TO CHANGE WITHOUT NOTICE.

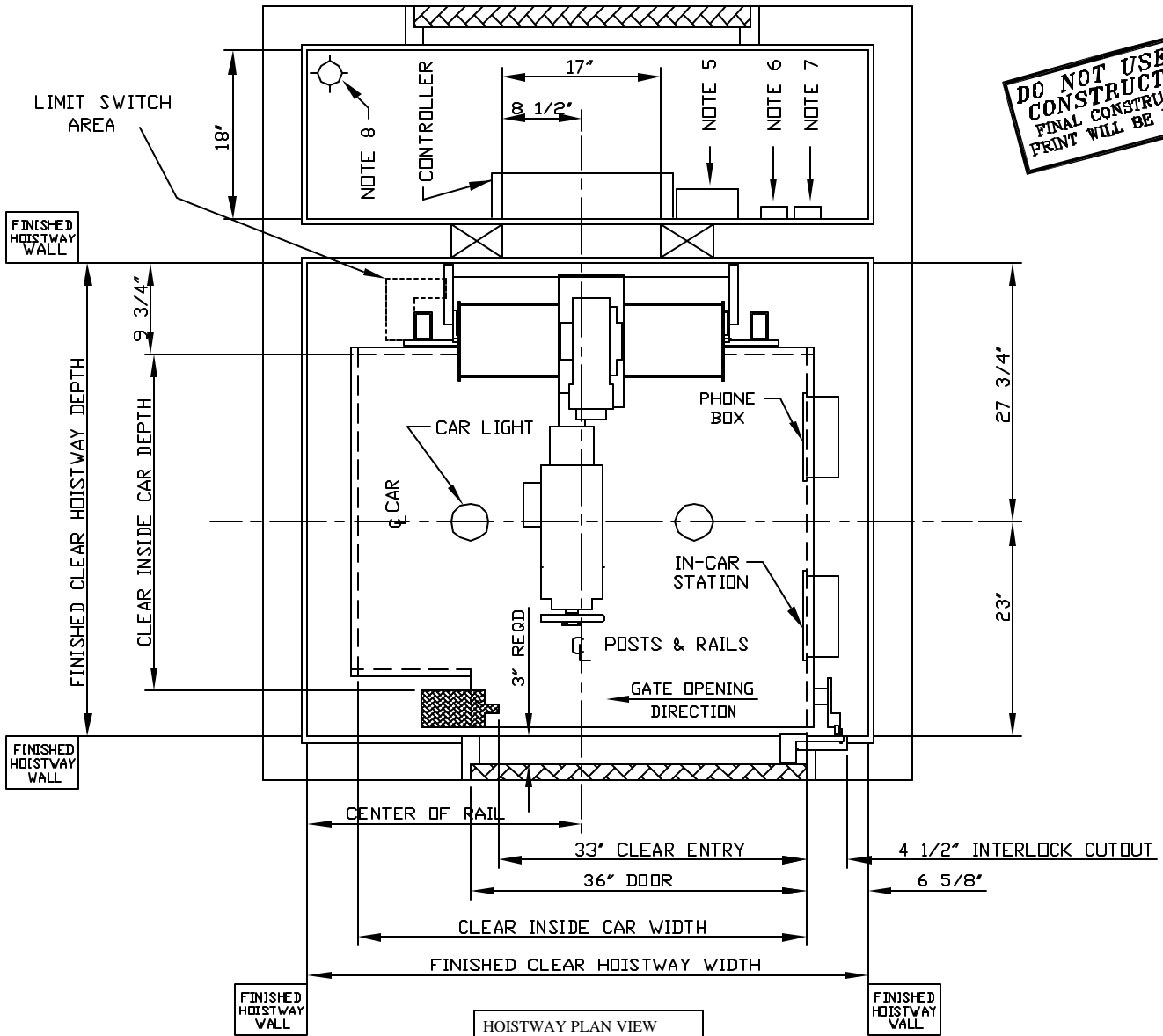
OPERATING CONTROLS
(TYPICAL)



RAIL SUPPORT DETAIL



**DO NOT USE FOR
CONSTRUCTION
FINAL CONSTRUCTION
PRINT WILL BE PROVIDED**



HOISTWAY PLAN VIEW

CAR SIZE	HOISTWAY WIDTH	HOISTWAY DEPTH	CENTER OF RAIL
48" W X 36" D	60"	50 3/4'	29 3/8"
60" W X 36" D	72"	50 3/4'	35 3/8"

AMERICAN CRESCENT / MATOT

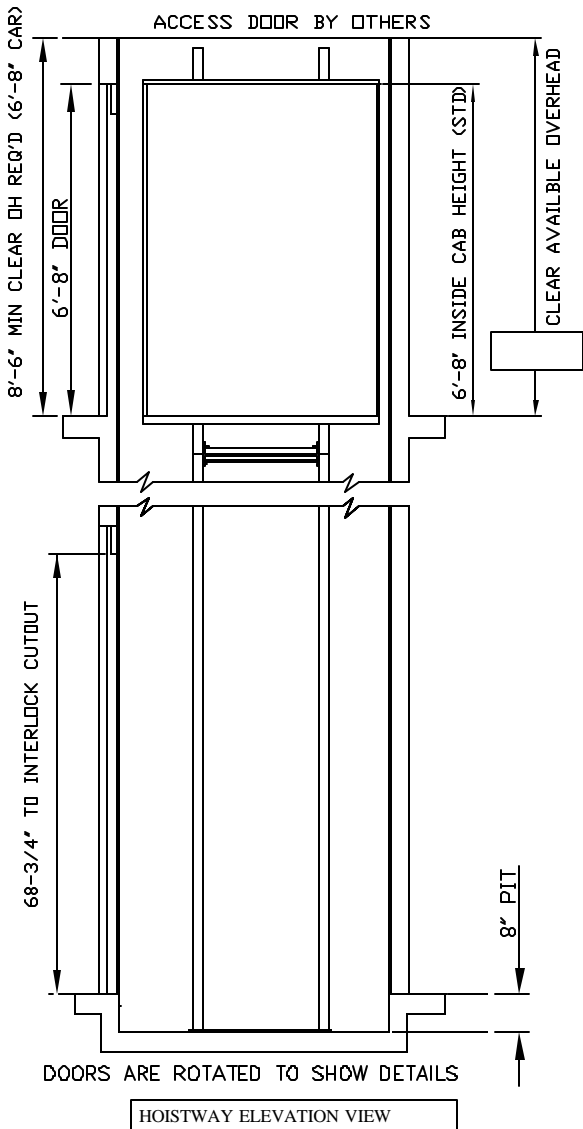
PHONE: (601) 798-9392 PHONE: (708) 547-1888
FAX: (601) 798-9444 FAX: (708) 547-1608

DRAWING NO.

SCALE:

DO1RRL-WP

NO SCALE



WORK DONE BY OTHERS

- (1) A suitable, legal, 2 hour rated, hoistway must be provided plumb and square within 1/16" for every 10' of travel. Hoistway must be free of all obstructions. Hoistway floor must be level.
- (2) Suitable, legal, 1-1/2' fire rated hoistway entrance doors and a machine access door must be provided. Entrance doors and associated framing to be provided and installed after the elevator is set in place. Door closers are recommended.
- (3) The front wall of the hoistway, for the entire width of the hoistway, at least 8'-0" high, is to be left open until the elevator car is installed.
- (4) Clearance between the hoistway doors and the car sill must not exceed 3" and the clearance between the hoistway door and the closed car gate must not exceed 5" per ANSI/ASME Elevator Code A17.1 - 1990. Check local codes provisions which may take precedence.
- (5) A fused, lockable, 3 pole, 240VAC, 30 amp, disconnect switch is to be provided.
- (6) A separate 120VAC, 15 amp, single phase power supply with a fused, lockable switch or circuit breaker must be provided and brought to the elevator controller for the car lights.
- (7) An outside telephone line must be provided and brought to the controller.
- (8) A suitable machine room, with a 120VAC convenience outlet, a light and a light switch must be provided. Machine room lighting must be maintained at a minimum of 10 foot-candles.
- (9) A pit of correct dimensions and suitable load bearing capacity must be provided on the lowest level as shown on the final drawings
- (10) Structural load requirements: 1800lbs. vertical on pit floor, 50lbs. horizontal at each wall bracket.

MECHANICAL AND CAR SPECIFICATIONS

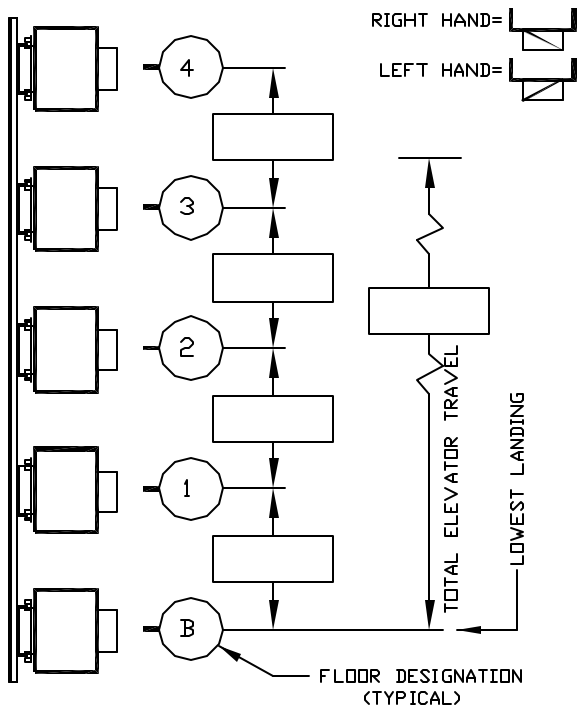
ESTIMATED MACHINE WEIGHT = 250 LBS CAPACITY: 750 LBS
 MAXIMUM CAR WEIGHT (INCLUDING CAR CAPACITY) = 1400 LBS

JOB SPECIFICATIONS

MACHINE TYPE:	WINDING DRUM ABOVE
MOTOR:	3 HP, 220 V, 1 PH, 60 HZ
AMPERAGE:	STARTING 78 RUNNING 15
CAB DESIGN	
ENTRANCE TRIM	
WALL FINISH	
GATE	
HANDRAIL	
FLOORING	
PHONE	
HOISTWAY DOORS	BY OTHERS
FIXTURE FINISH	
CAR CEILING	WHITE MELAMINE
MISC. CAR OPTIONS	

TRAVEL/DOOR LOCATIONS & SWINGS/FLOOR DESIGNATIONS

MARK DOOR SWINGS AT EACH LANDING



PROJECT ELEVATOR CONTRACTOR

NO.	REVISIONS	DATE	BY
A			
B			
C			

AMERICAN CRESCENT / MATOT
 PHONE: (601) 798-9392 PHONE: (708) 647-1888
 FAX: (601) 798-9444 FAX: (708) 647-1608

DATE: 4/12/02

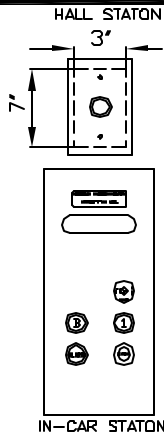
SCALE:

DRAWING NO.
 D01RRL-WP

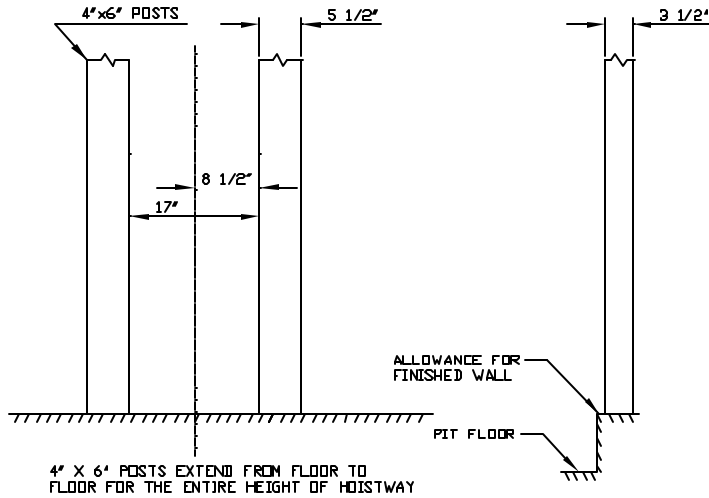
NO SCALE

THIS IS A TYPICAL DRAWING. CONTACT YOUR AMERICAN CRESCENT/MATOT SALES REPRESENTATIVE FOR PROJECT SPECIFIC DRAWINGS. DIMENSIONS ARE SUBJECT TO CHANGE WITHOUT NOTICE.

OPERATING CONTROLS
(TYPICAL)

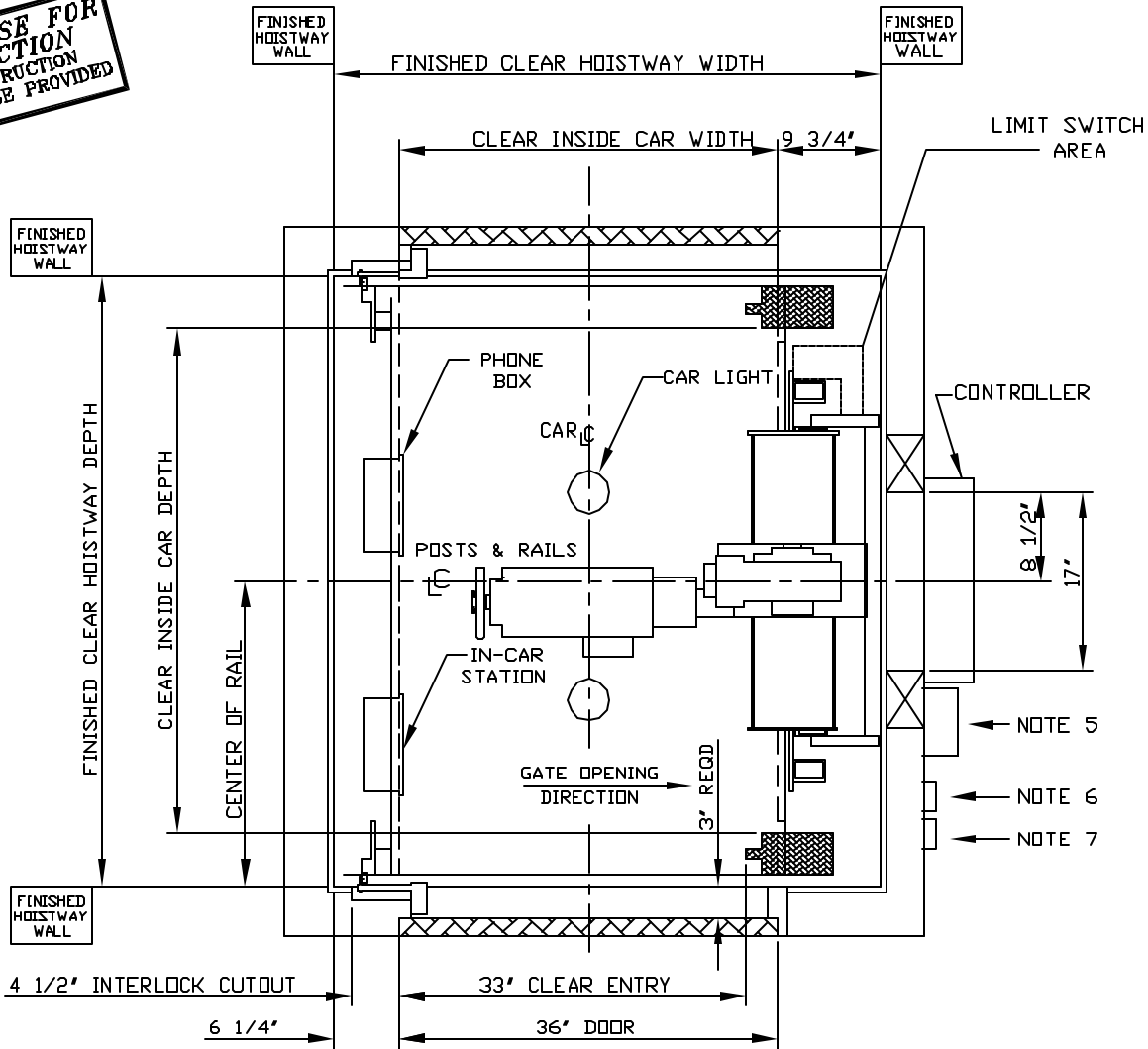


RAIL SUPPORT DETAIL



4" X 6" POSTS EXTEND FROM FLOOR TO FLOOR FOR THE ENTIRE HEIGHT OF HOISTWAY

DO NOT USE FOR CONSTRUCTION
FINAL CONSTRUCTION PRINT WILL BE PROVIDED

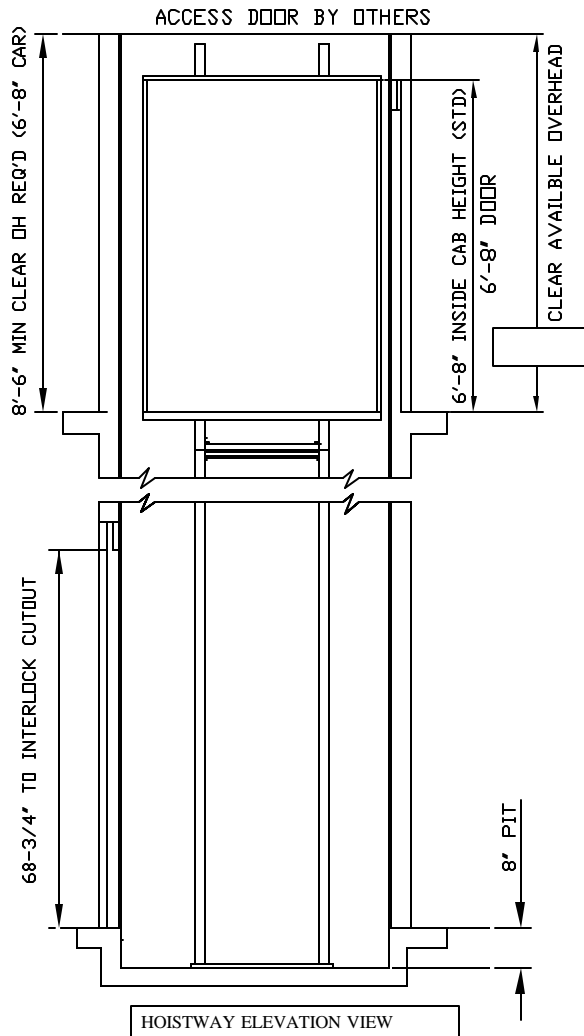


HOISTWAY PLAN VIEW

CAR SIZE	HOISTWAY WIDTH	HOISTWAY DEPTH	CENTER OF RAIL
36' W X 48' D	52"	58"	29"
36' W X 60" D	52"	70"	35"
40' W X 54" D	56"	64"	32"

AMERICAN CRESCENT / MATOT
 PHONE: (601) 798-9392 PHONE: (708) 547-1888
 FAX: (601) 798-9444 FAX: (708) 547-1608

DRAWING NO. DO2RH9-WP	SCALE: NO SCALE
--------------------------	--------------------



WORK DONE BY OTHERS

- (1) A suitable, legal, 2 hour rated, hoistway must be provided plumb and square within 1/16" for every 10' of travel. Hoistway must be free of all obstructions. Hoistway floor must be level.
- (2) Suitable, legal, 1-1/2' fire rated hoistway entrance doors and a machine access door must be provided. Entrance doors and associated framing to be provided and installed after the elevator is set in place. Door closers are recommended.
- (3) The front wall of the hoistway, for the entire width of the hoistway, at least 8'-0" high, is to be left open until the elevator car is installed.
- (4) Clearance between the hoistway doors and the car sill must not exceed 3" and the clearance between the hoistway door and the closed car gate must not exceed 5" per ANSI/ASME Elevator Code A17.1 - 1990. Check local codes provisions which may take precedence.
- (5) A fused, lockable, 3 pole, 240VAC, 30 amp, disconnect switch is to be provided.
- (6) A separate 120VAC, 15 amp, single phase power supply with a fused, lockable switch or circuit breaker must be provided and brought to the elevator controller for the car lights.
- (7) An outside telephone line must be provided and brought to the controller.
- (8) A suitable machine room, with a 120VAC convenience outlet, a light and a light switch must be provided. Machine room lighting must be maintained at a minimum of 10 foot-candles.
- (9) A pit of correct dimensions and suitable load bearing capacity must be provided on the lowest level as shown on the final drawings
- (10) Structural load requirements: 1800lbs. vertical on pit floor, 50lbs. horizontal at each wall bracket.

MECHANICAL AND CAR SPECIFICATIONS

ESTIMATED MACHINE WEIGHT = 250 LBS CAPACITY: 750 LBS

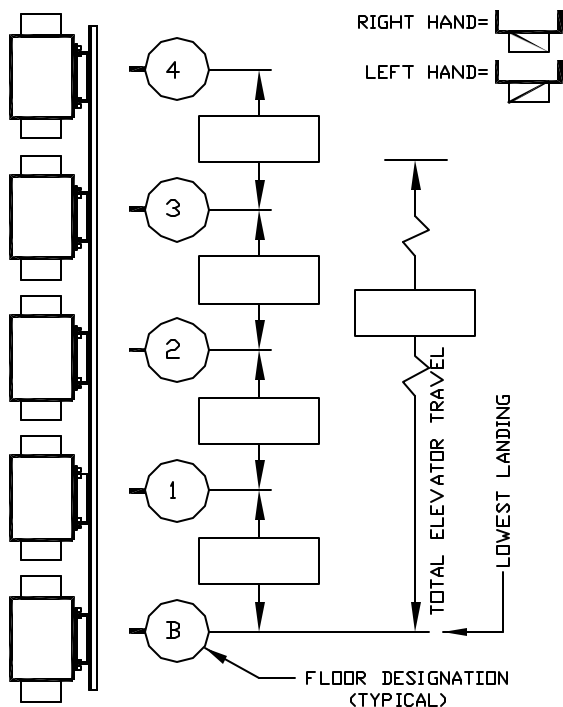
MAXIMUM CAR WEIGHT (INCLUDING CAR CAPACITY) = 1400 LBS

JOB SPECIFICATIONS

MACHINE TYPE:	WINDING DRUM ABOVE
MOTOR:	3 HP, 220 V, 1 PH, 60 HZ
AMPERAGE:	STARTING 78 RUNNING 15
CAB DESIGN	
ENTRANCE TRIM	
WALL FINISH	
GATE	
HANDRAIL	
FLOORING	
PHONE	
HOISTWAY DOORS	BY OTHERS
FIXTURE FINISH	
CAR CEILING	WHITE MELAMINE
MISC. CAR OPTIONS	

TRAVEL/DOOR LOCATIONS & SWINGS/FLOOR DESIGNATIONS

MARK DOOR SWINGS AT EACH LANDING



PROJECT ELEVATOR CONTRACTOR

NO.	REVISIONS	DATE	BY
A			
B			
C			

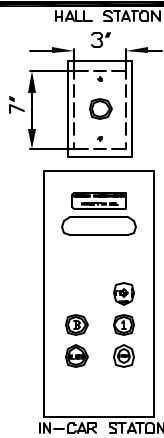
AMERICAN CRESCENT / MATOT
 PHONE: (601) 798-9392 PHONE: (708) 647-1888
 FAX: (601) 798-9444 FAX: (708) 547-1608

DATE: 4/12/02
 DRAWING NO.
 D02RH9-WP

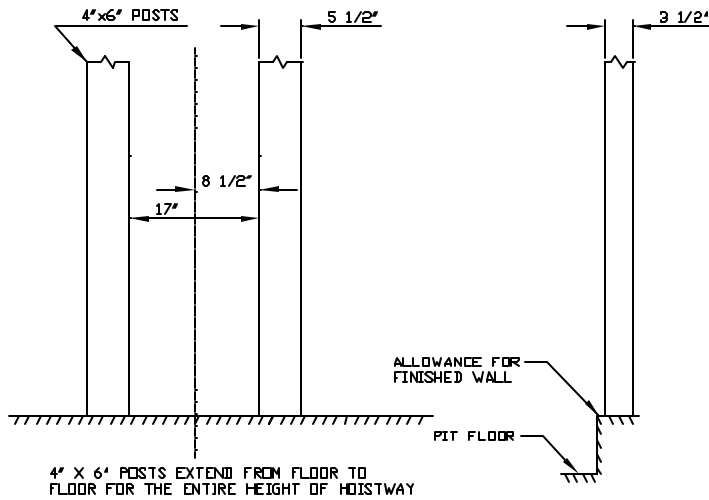
SCALE:
 NO SCALE

THIS IS A TYPICAL DRAWING. CONTACT YOUR AMERICAN CRESCENT/MATOT SALES REPRESENTATIVE FOR PROJECT SPECIFIC DRAWINGS. DIMENSIONS ARE SUBJECT TO CHANGE WITHOUT NOTICE.

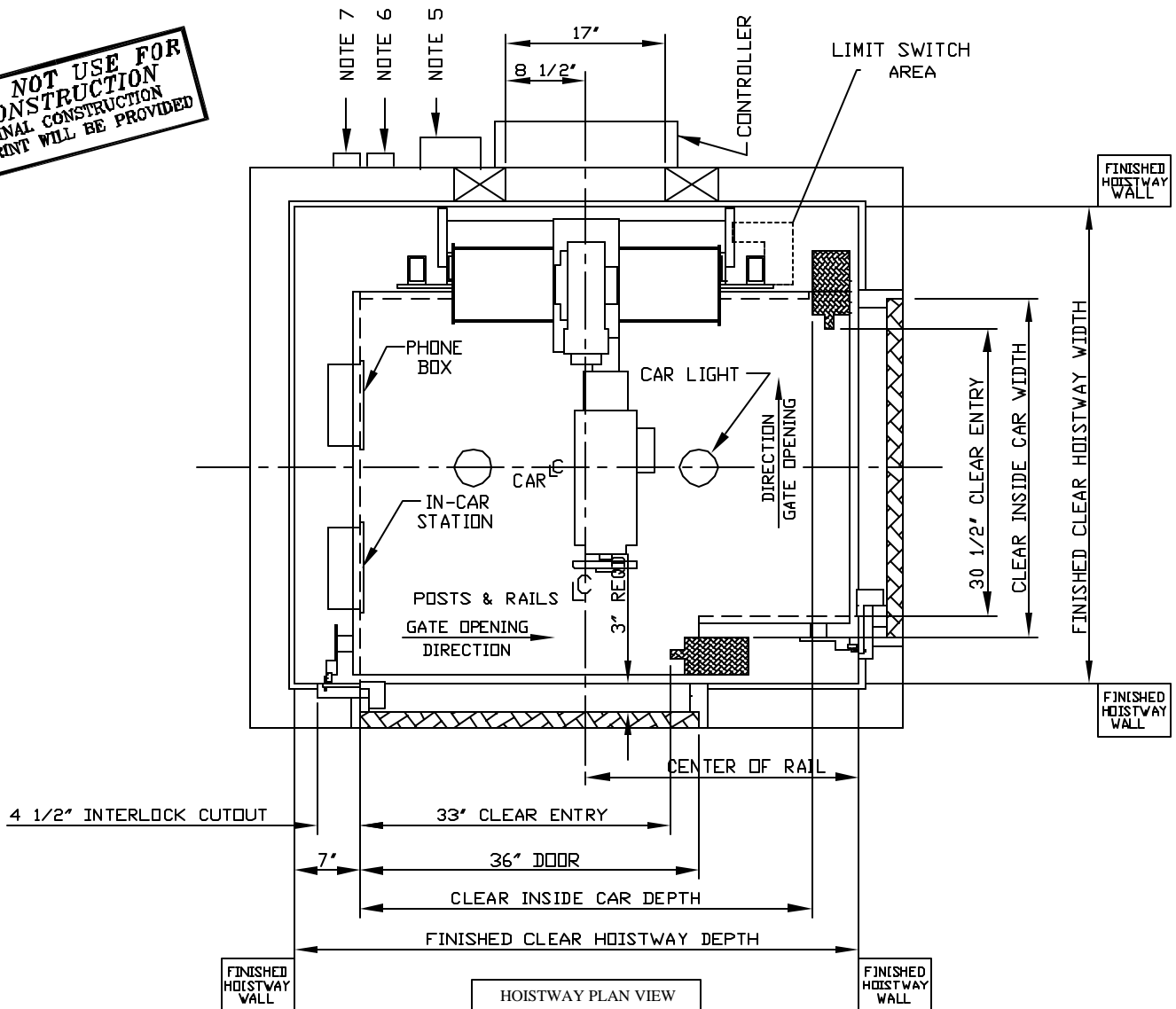
OPERATING CONTROLS
(TYPICAL)



RAIL SUPPORT DETAIL



DO NOT USE FOR CONSTRUCTION
FINAL CONSTRUCTION PRINT WILL BE PROVIDED



HOISTWAY PLAN VIEW

CAR SIZE	HOISTWAY WIDTH	HOISTWAY DEPTH	CENTER OF RAIL
36" W X 48" D	50 3/4'	60'	29'
36" W X 60" D	50 3/4'	72'	35'

AMERICAN CRESCENT / MATOT

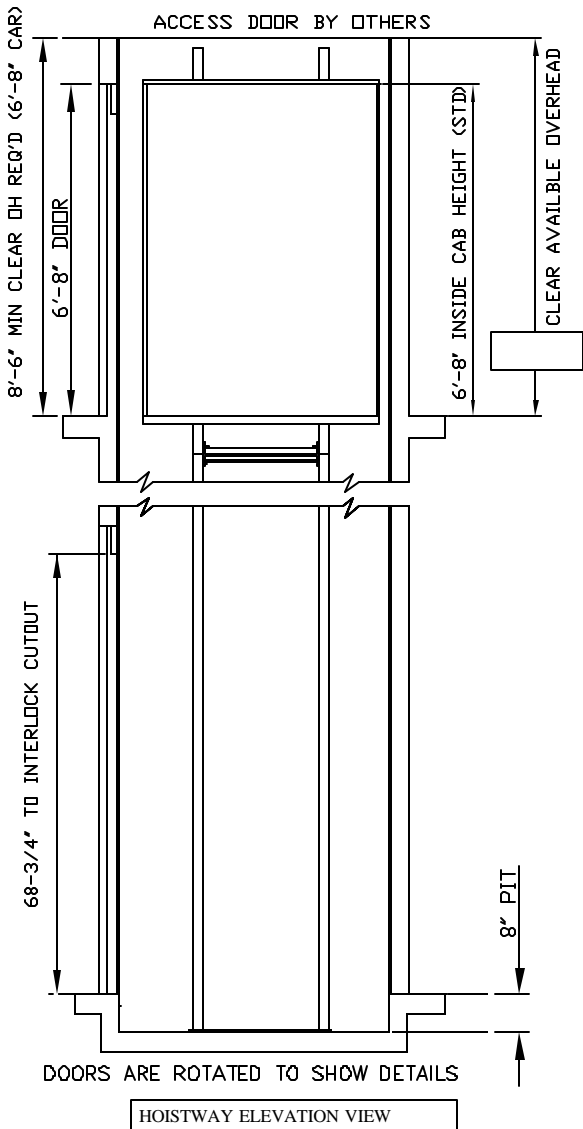
PHONE: (601) 798-9392 PHONE: (708) 547-1888
FAX: (601) 798-9444 FAX: (708) 547-1608

DRAWING NO.

SCALE:

DO3RH99-WP

NO SCALE



WORK DONE BY OTHERS

- (1) A suitable, legal, 2 hour rated, hoistway must be provided plumb and square within 1/16" for every 10' of travel. Hoistway must be free of all obstructions. Hoistway floor must be level.
- (2) Suitable, legal, 1-1/2' fire rated hoistway entrance doors and a machine access door must be provided. Entrance doors and associated framing to be provided and installed after the elevator is set in place. Door closers are recommended.
- (3) The front wall of the hoistway, for the entire width of the hoistway, at least 8'-0" high, is to be left open until the elevator car is installed.
- (4) Clearance between the hoistway doors and the car sill must not exceed 3" and the clearance between the hoistway door and the closed car gate must not exceed 5" per ANSI/ASME Elevator Code A17.1 - 1990. Check local codes provisions which may take precedence.
- (5) A fused, lockable, 3 pole, 240VAC, 30 amp, disconnect switch is to be provided.
- (6) A separate 120VAC, 15 amp, single phase power supply with a fused, lockable switch or circuit breaker must be provided and brought to the elevator controller for the car lights.
- (7) An outside telephone line must be provided and brought to the controller.
- (8) A suitable machine room, with a 120VAC convenience outlet, a light and a light switch must be provided. Machine room lighting must be maintained at a minimum of 10 foot-candles.
- (9) A pit of correct dimensions and suitable load bearing capacity must be provided on the lowest level as shown on the final drawings
- (10) Structural load requirements: 1800lbs. vertical on pit floor, 50lbs. horizontal at each wall bracket.

MECHANICAL AND CAR SPECIFICATIONS

ESTIMATED MACHINE WEIGHT = 250 LBS CAPACITY: 750 LBS
 MAXIMUM CAR WEIGHT (INCLUDING CAR CAPACITY) = 1400 LBS

JOB SPECIFICATIONS

MACHINE TYPE:	WINDING DRUM ABOVE
MOTOR:	3 HP, 220 V, 1 PH, 60 HZ
AMPERAGE:	STARTING 78 RUNNING 15
CAB DESIGN	
ENTRANCE TRIM	
WALL FINISH	
GATE	
HANDRAIL	
FLOORING	
PHONE	
HOISTWAY DOORS	BY OTHERS
FIXTURE FINISH	
CAR CEILING	WHITE MELAMINE
MISC. CAR OPTIONS	

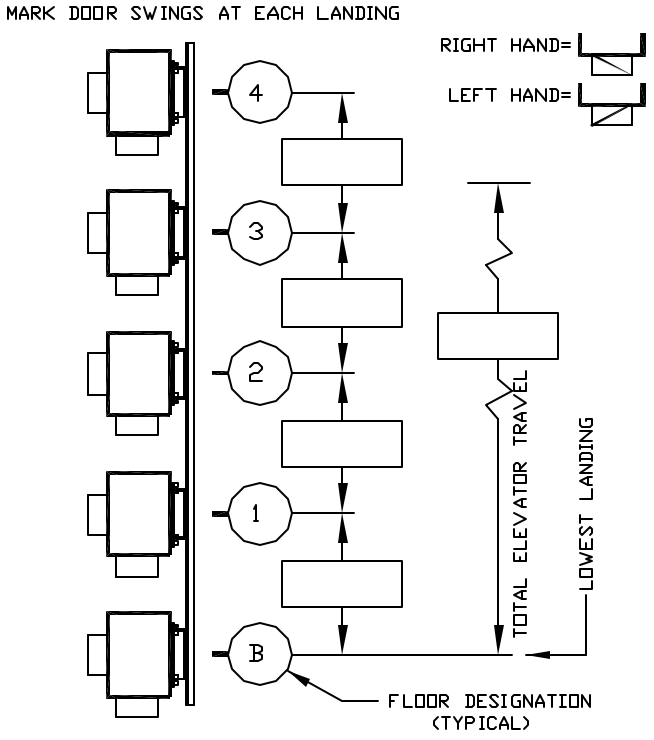
PROJECT _____ ELEVATOR CONTRACTOR _____

NO.	REVISIONS	DATE	BY
A			
B			
C			

AMERICAN CRESCENT / MATOT
 PHONE: (601) 798-9392 PHONE: (708) 647-1888
 FAX: (601) 798-9444 FAX: (708) 547-1608

DATE: 4/12/02 SCALE: NO SCALE
 DRAWING NO. DO3RH99-WP

TRAVEL/DOOR LOCATIONS & SWINGS/FLOOR DESIGNATIONS



THIS IS A TYPICAL DRAWING. CONTACT YOUR AMERICAN CRESCENT/MATOT SALES REPRESENTATIVE FOR PROJECT SPECIFIC DRAWINGS. DIMENSIONS ARE SUBJECT TO CHANGE WITHOUT NOTICE.