

TITLE: JEEVES PRO 125 GAL  
 DOORS - SAME SIDE WITH GATE  
 24"W x 24"D x 24"H 125 lb. Capacity

REV	DESCRIPTION	DATE	BY

REV	DESCRIPTION	DATE	BY

STOPS: 2  IN-LINE  OPP.

OPENINGS: 2 @ LOWER, UPPER

TRAVEL: T.B.O.

<input checked="" type="checkbox"/> SAME SIDE	<input checked="" type="checkbox"/> DRYWALL CONSTRUCTION
<input type="checkbox"/> SLIDE-UP	<input type="checkbox"/> MASONRY CONSTRUCTION
<input type="checkbox"/> FLOOR LOADING	<input type="checkbox"/> PLAIN STEEL - PRIMED
<input type="checkbox"/> HOISTWAY DOORS	<input checked="" type="checkbox"/> STAINLESS STEEL - #4
<input type="checkbox"/> FUSIBLE LINK	<input type="checkbox"/> COUNTER LOADING

1 1/2 HR U/L "B" LABEL

EMERGENCY RELEASE

NON-PLUGGABLE INTERLOCK

HG-1 SINGLE CONTACT DOOR LOCK & CONTACT NEMA 1

HG-2 DOUBLE CONTACT INTERLOCK NEMA 1

JAMB MOUNTED 24V PUSHBUTTON STATIONS:  
 NON-ILLUMINATED  ILLUMINATED  
 BUTTONS:  UP  DOWN  1  2  3  
 LIGHTS:  CAR HERE  IN USE  
 HEADER MOUNTED 24V CAR ARRIVAL LIGHTS

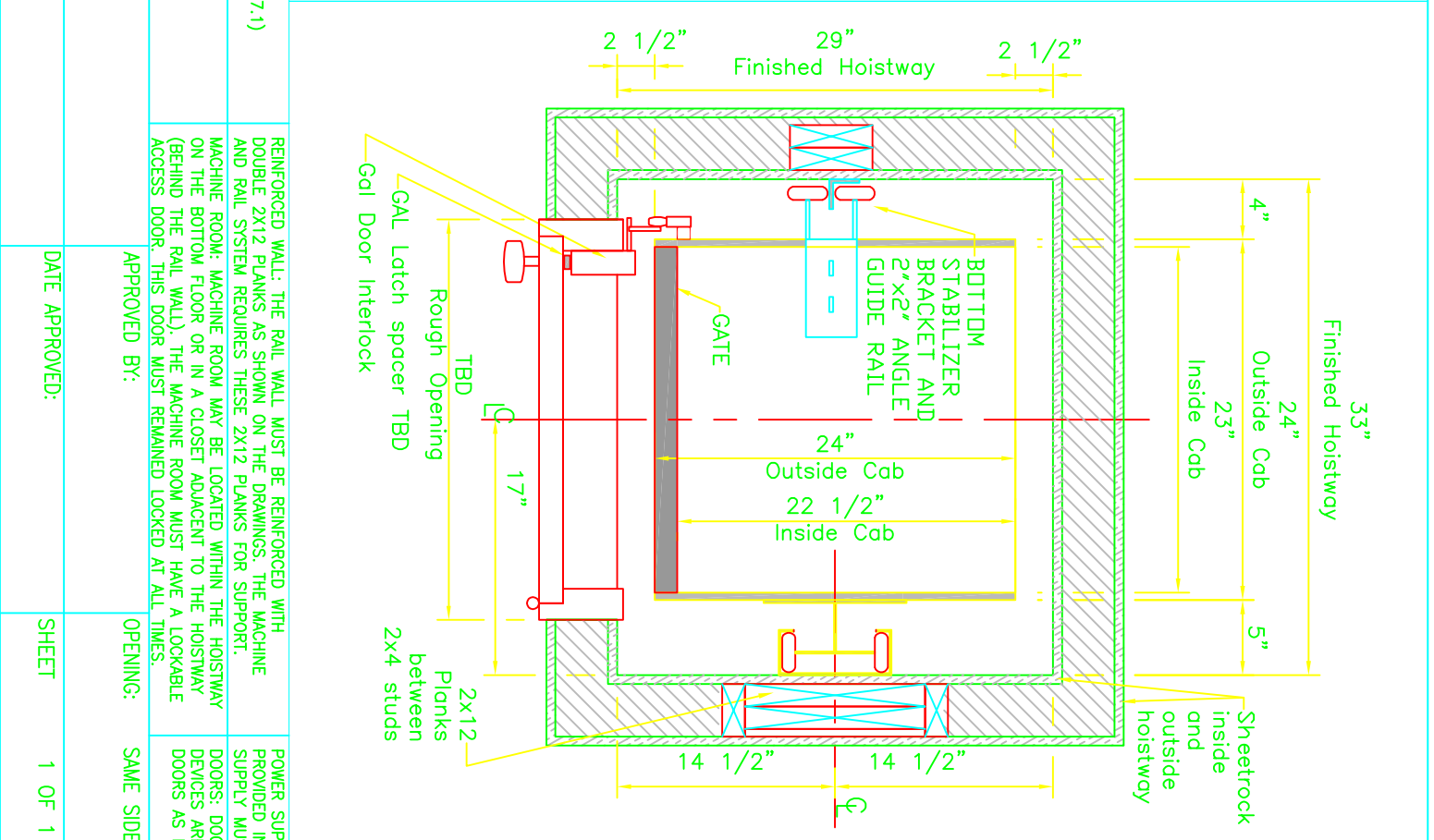
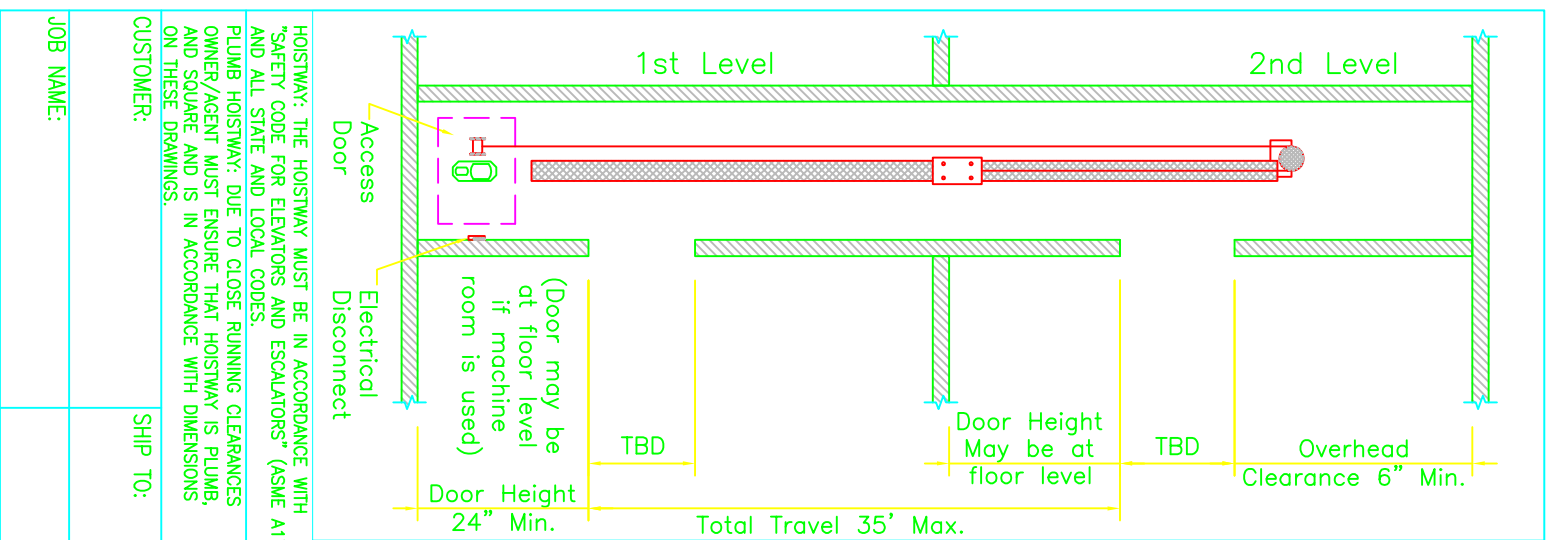
CAR GATE ALUMINUM

ACCESS DOOR  SLIDE-UP  PLAIN STEEL BY: Nationwide Lifts  
 1 1/2 HR U/L "B" NONE / BY OTHERS

HOISTWAY TO BE BUILT BEFORE DUMBWATER IS INSTALLED EXCEPT THE WALLS ARE TO BE OMITTED WHERE HOISTWAY DOORS OCCUR UNTIL THE DUMBWATER IS INSTALLED & HOISTWAY DOORS ARE SET IN PLACE

POWER SUPPLY: A LOCKABLE FUSED DISCONNECT MUST BE PROVIDED IN ACCORDANCE WITH LOCAL ELECTRICAL CODES. THE SUPPLY MUST BE A 115V, 20A DEDICATED CIRCUIT.

DOORS: DOORS MUST MEET LOCAL FIRE CODE. INTERLOCK DEVICES ARE PROVIDED AND MUST BE MOUNTED TO DOORS AS DIRECTED IN THE INSTALLATION GUIDE.



HOISTWAY: THE HOISTWAY MUST BE IN ACCORDANCE WITH "SAFETY CODE FOR ELEVATORS AND ESCALATORS" (ASME A17.1) AND ALL STATE AND LOCAL CODES.  
 PLUMB HOISTWAY: DUE TO CLOSE RUNNING CLEARANCES OWNER/AGENT MUST ENSURE THAT HOISTWAY IS PLUMB, AND SQUARE AND IS IN ACCORDANCE WITH DIMENSIONS ON THESE DRAWINGS.

REINFORCED WALL: THE RAIL WALL MUST BE REINFORCED WITH DOUBLE 2X12 PLANKS AS SHOWN ON THE DRAWINGS. THE MACHINE AND RAIL SYSTEM REQUIRES THESE 2X12 PLANKS FOR SUPPORT.  
 MACHINE ROOM: MACHINE ROOM MAY BE LOCATED WITHIN THE HOISTWAY ON THE BOTTOM FLOOR OR IN A CLOSET ADJACENT TO THE HOISTWAY (BEHIND THE RAIL WALL). THE MACHINE ROOM MUST HAVE A LOCKABLE ACCESS DOOR. THIS DOOR MUST REMAINED LOCKED AT ALL TIMES.

CUSTOMER: \_\_\_\_\_ SHIP TO: \_\_\_\_\_  
 APPROVED BY: \_\_\_\_\_ OPENING: SAME SIDE  
 JOB NAME: \_\_\_\_\_ DATE APPROVED: \_\_\_\_\_ SHEET 1 OF 1  
 DATE: 10/26/09